

# SPIEKER PLAZA LOOKING NORTH TOWARDS VALLEY LIFE SCIENCES BUILDING



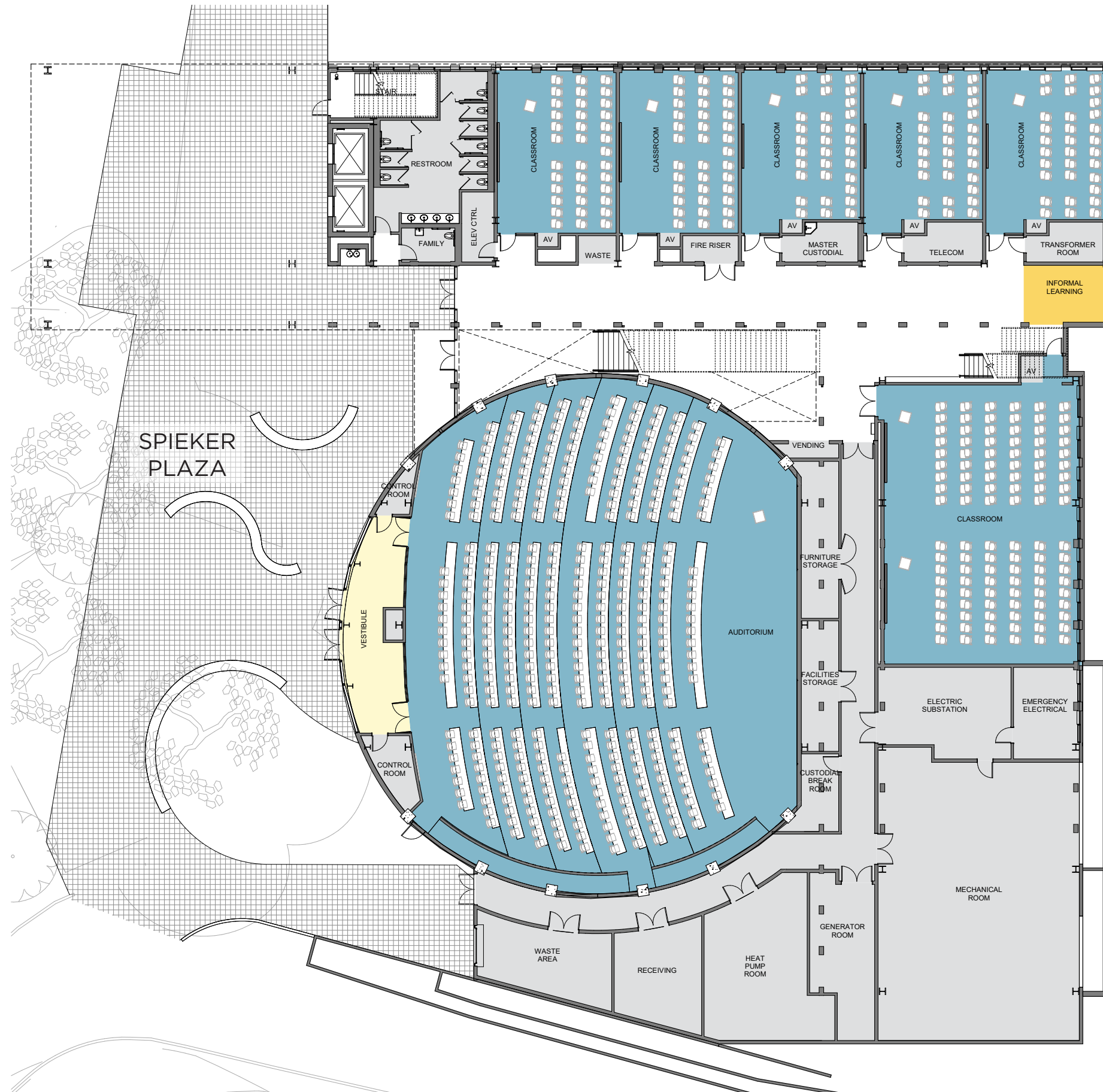


## LEVEL 2 TERRACE LOOKING NORTH



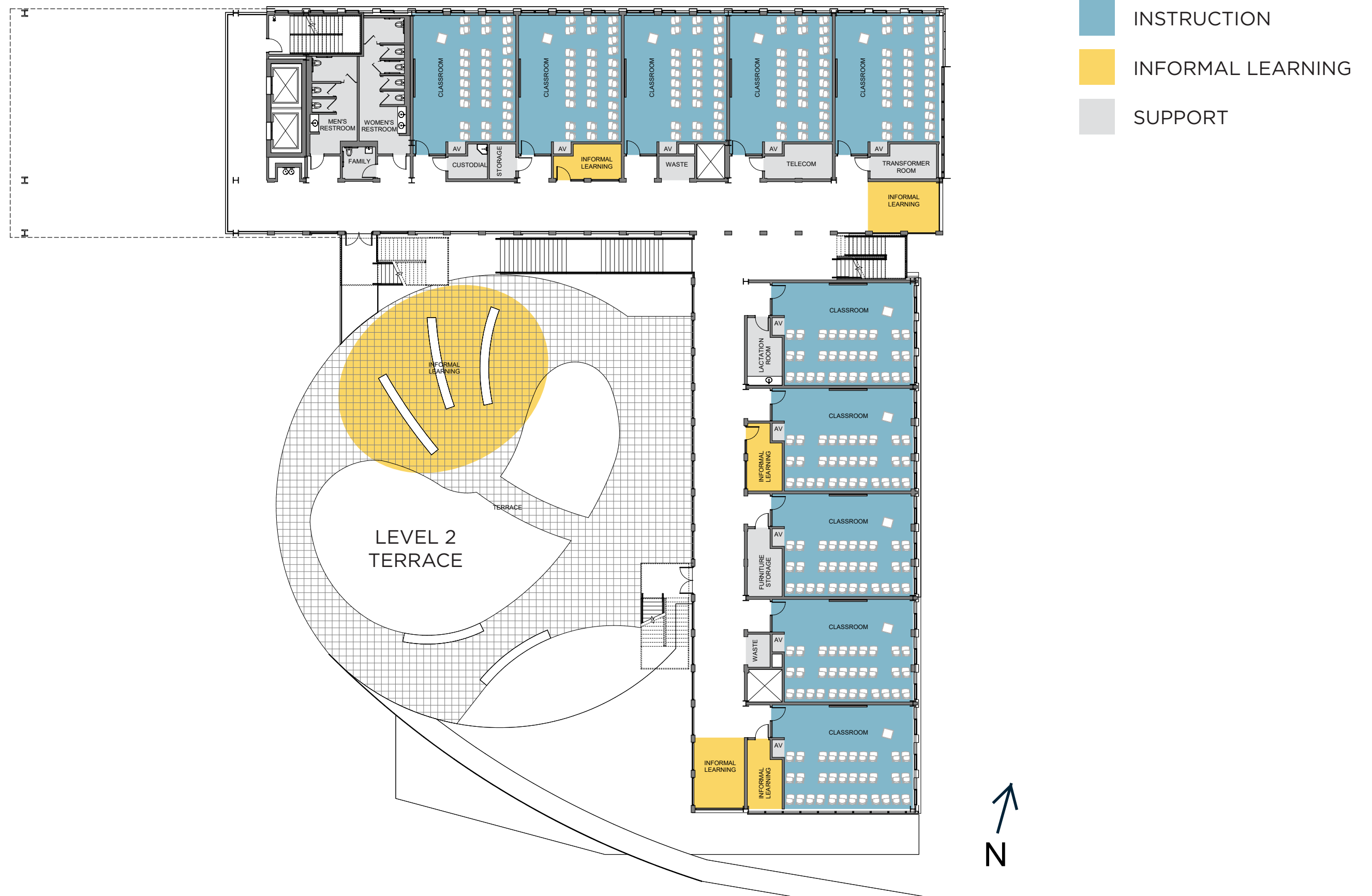


# LEVEL 1 FLOOR PLAN | AUDITORIUM AND CLASSROOMS



- INSTRUCTION
- INFORMAL LEARNING
- SUPPORT

# LEVEL 2 FLOOR PLAN | CLASSROOMS AND INFORMAL LEARNING

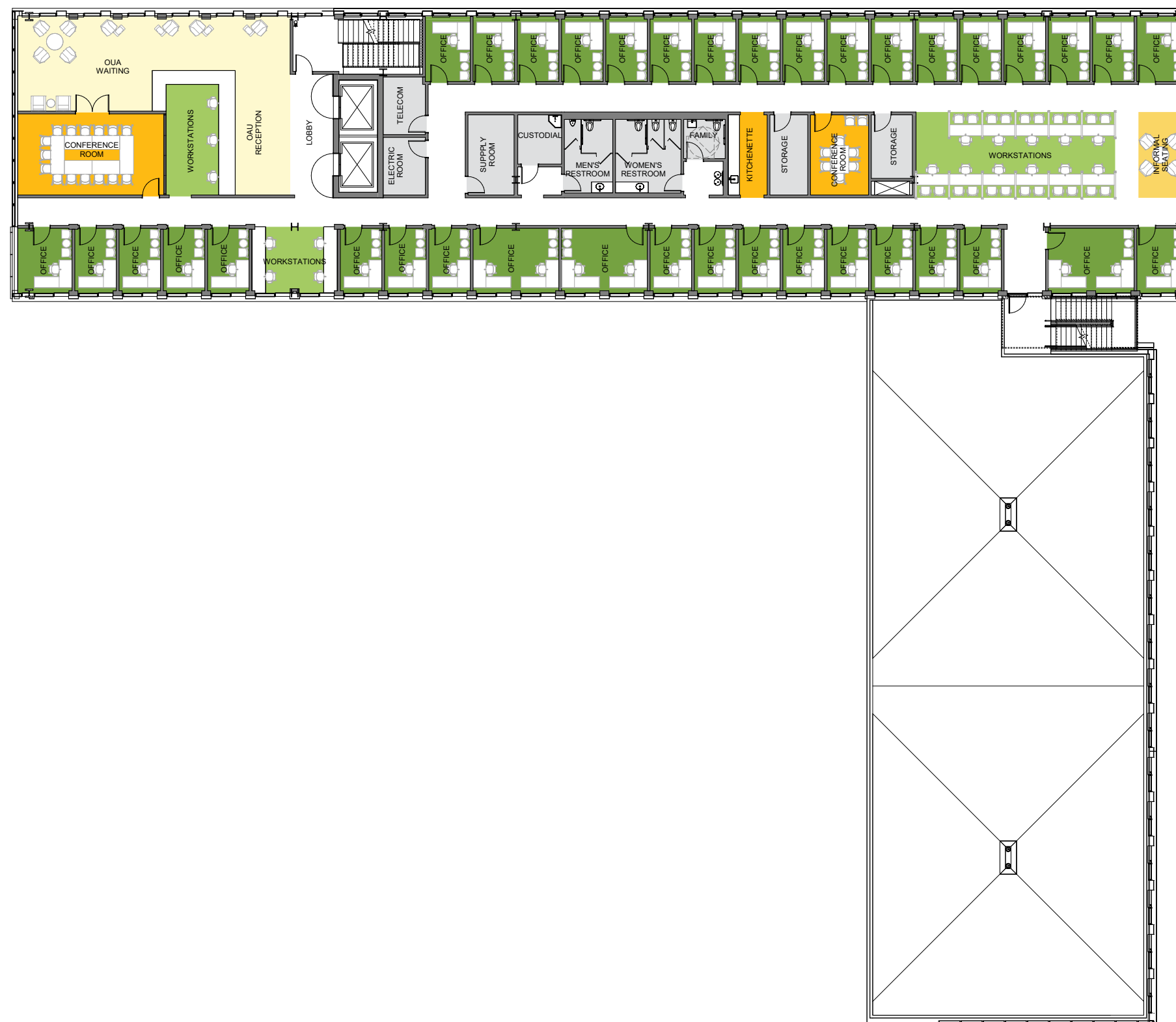


# LEVEL 3 FLOOR PLAN | CLASSROOMS AND INFORMAL LEARNING



- INSTRUCTION
- INFORMAL LEARNING
- SUPPORT

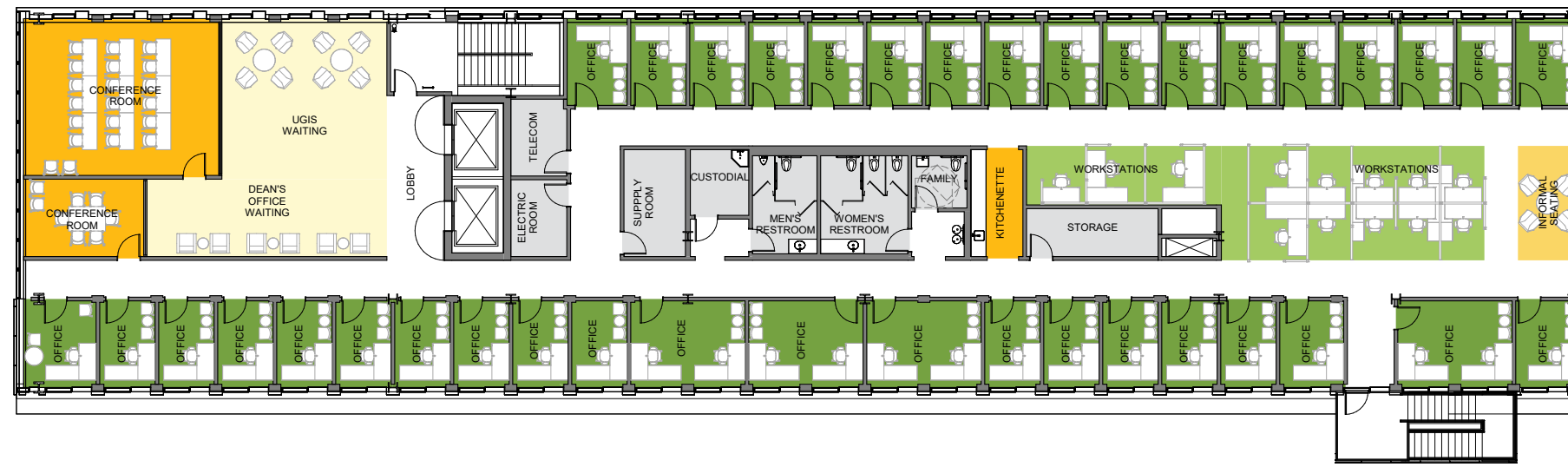
# LEVEL 4 FLOOR PLAN | OFFICES, COLLEGE OF LETTERS AND SCIENCES



- OFFICE
- WORKSTATION
- CONFERENCE
- COLLABORATION
- WAITING
- SUPPORT



# LEVEL 5 FLOOR PLAN | OFFICES, COLLEGE OF LETTERS AND SCIENCES



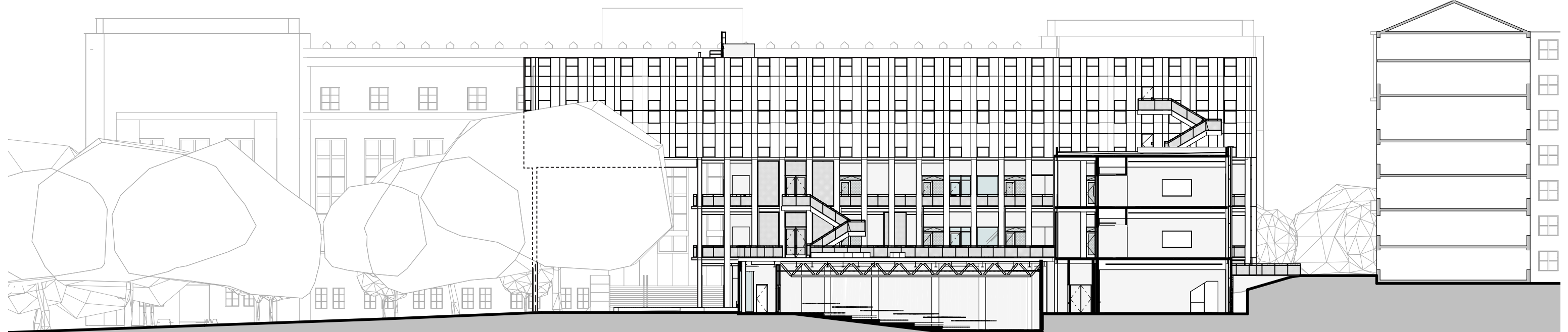
- OFFICE
- WORKSTATION
- CONFERENCE
- COLLABORATION
- WAITING
- SUPPORT



# SITE SECTIONS

Valley Life Sciences Building  
(Beyond)

Dwinelle Hall

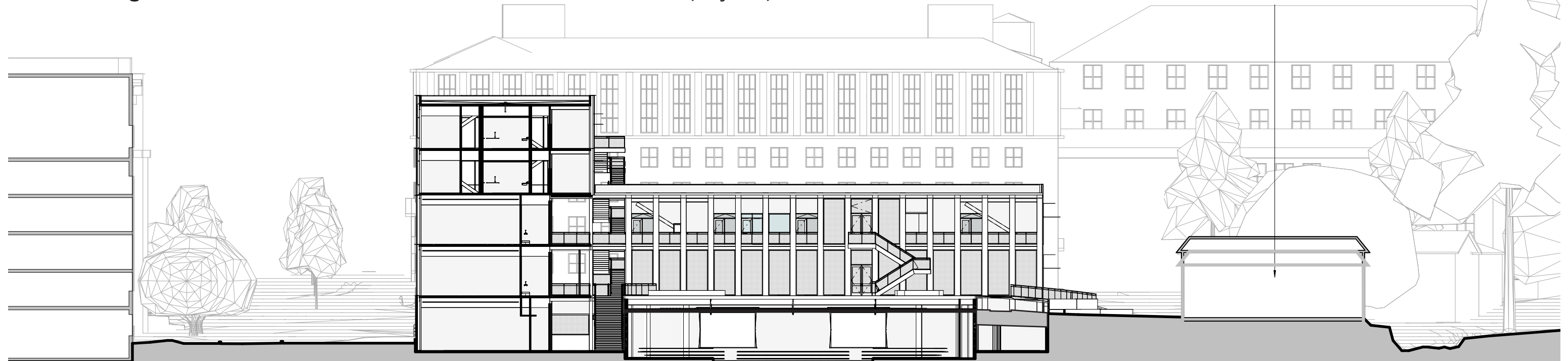


E-W | Looking North

Valley Life Sciences  
Building

Dwinelle Hall  
(Beyond)

Dwinelle Hall  
Annex



N-S | Looking East



# ELEVATIONS



- Composite metal or ultra high-performance concrete rainscreen panels
- Low-reflectivity glass with operable windows
- Wire mesh guardrails
- Concrete base with formliner

**North Elevation** | Campanile Way



- Metal shading at south and west elevations
- Synthetic stucco
- Mass timber structure (pressure treated where exposed)

**South Elevation** | Frank Schlessinger Way

# ELEVATIONS



**East Elevation** | Grade Street



**West Elevation** | Spieker Plaza



# SUSTAINABILITY STRATEGIES

## Natural ventilation cooling at offices

for increased comfort and reduced energy use

**Ceiling fans at offices** for increased comfort and reduced energy use (alternate)

**Exterior circulation** for improved IAQ and opportunity for classroom cross ventilation

**Mass timber structure** for reduced embodied carbon and biophilic enjoyment

**Outdoor classroom and informal learning** for flexibility and resiliency

**Extension of the Grinnell Natural Area and Strawberry Creek**

LEED Gold



**Reduced Energy Use** of 30 kBTU/ft<sup>2</sup>/year to meet Berkeley standards

**PV-ready roof** for future on-site energy production

**Natural ventilation cooling and night flush at classrooms** for increased comfort and resiliency; reduced energy use

**Integral solar shading to south and west** for reduced cooling load

**Self-treating and self-retaining landscapes** for reduced stormwater outfall