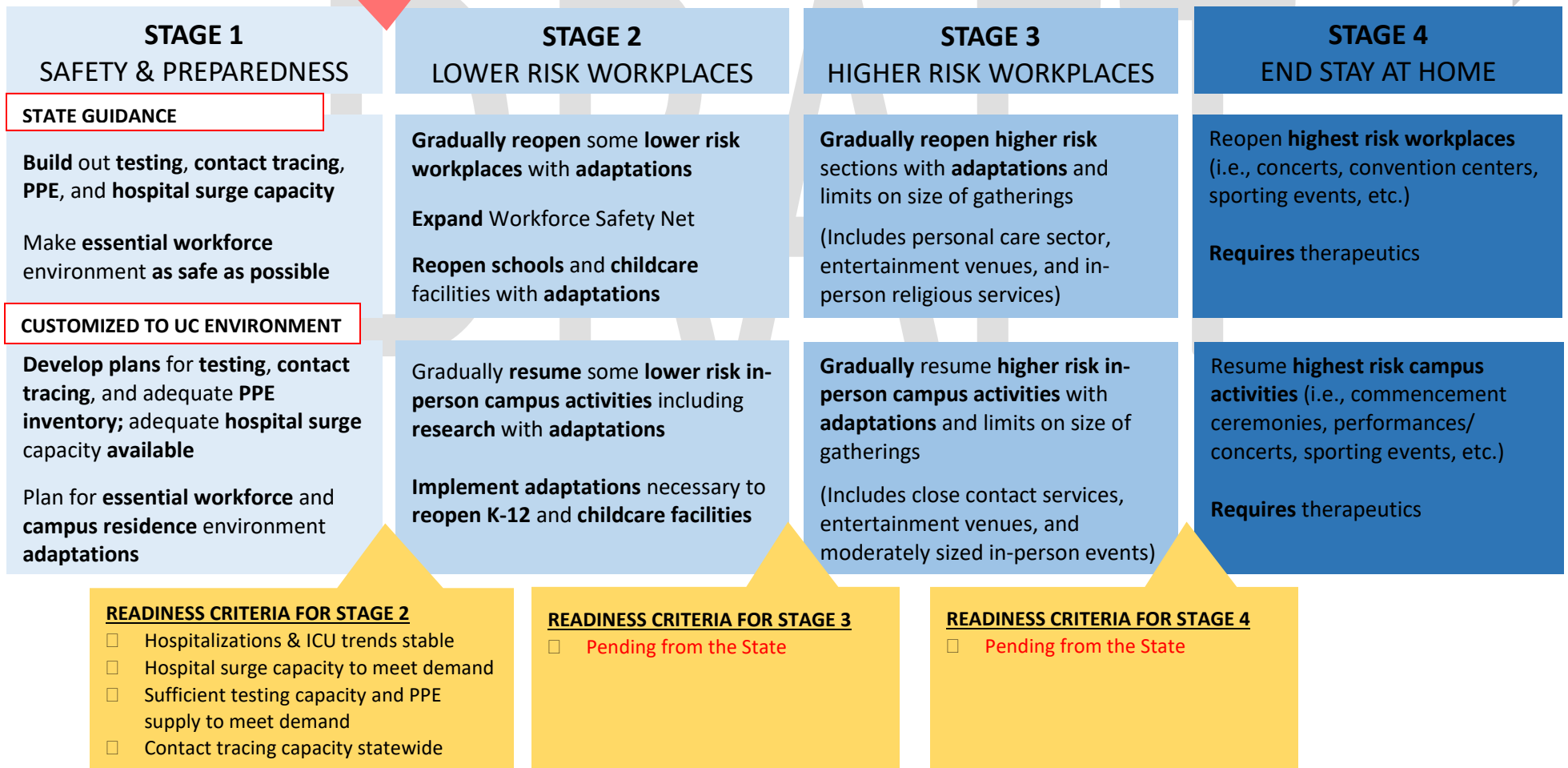


APPLICATION OF CALIFORNIA'S PANDEMIC ROADMAP TO UC DRAFT - FOR DISCUSSION AND PLANNING PURPOSES ONLY

This document is a planning tool designed to visually represent the applicability of currently available State of California pandemic roadmap guidelines to UC campus locations. These guidelines recommend a staged approach implementable on a county-by-county basis. The criteria for transitioning to the next stage will be met at the county and/or state level and is not intended to be met individually by each UC location. Local public health orders may supersede the guidance used to develop this planning tool and should be integrated into planning efforts accordingly. This is a "living document" and will be updated as additional guidance becomes available.

Transition via statewide modification to Stay-At-Home Order

RESILIENCY ROADMAP STAGES



APPLICATION OF CALIFORNIA'S PANDEMIC ROADMAP TO UC DRAFT - FOR DISCUSSION AND PLANNING PURPOSES ONLY

This matrix is a planning tool designed to visually represent the applicability of currently available State of California pandemic roadmap guidelines to UC campuses. Local public health orders may supersede the guidance used to develop this planning tool and should be integrated into planning efforts accordingly.

Campuses can use this matrix as a starting point to help organize local planning decisions. The information contained in the matrix is meant to be advisory not prescriptive and **should be edited** to reflect campus decision-making and local public health orders. Additional rows can be added to each functional area to better align with campus planning efforts.

PLANNING CONSIDERATIONS

- Travelers will need to adhere to CDC guidance regarding isolation following travel. Healthcare personnel are exempt from this requirement.
- Vulnerable individuals: Over 65 years of age and/or individuals with serious underlying health conditions, including high blood pressure, chronic lung disease, diabetes, obesity, asthma, and those whose immune system is compromised.
- Members of households with vulnerable individuals should be aware that by returning to work or other environments where physical distancing is not practical, precautions should be taken to isolate from vulnerable residents at home.

	STAGE 1	STAGE 2	STAGE 3	STAGE 4
HEALTH AND SAFETY MEASURES				
Physical Distancing	State stay-at-home order & local health orders	Maximize physical distancing	Maximize physical distancing	No restrictions
Vulnerable Populations	State stay-at-home order & local health orders	Continue stay-at-home	Continue stay-at-home	Resume public interactions with personal mitigation strategies
Face Coverings	Per local health order or as determined by campus	Require face coverings	Require face coverings	TBD by campus
Visitor Access	As determined by campus	TBD by campus	TBD by campus	TBD by campus
Symptom Screening	As determined by campus	TBD by campus	TBD by campus	TBD by campus
COVID+ Self-Reporting	As determined by campus	TBD by campus	TBD by campus	TBD by campus
Testing	As locally available	Under Review	Under Review	Under Review
Contact Tracing	Per local health authority	Under Review	Under Review	Under Review
Isolation/Quarantine Space	As determined by campus	TBD by campus	TBD by campus	TBD by campus
Add rows as needed				
INSTRUCTION & ACADEMIC FACILITIES				

	STAGE 1	STAGE 2	STAGE 3	STAGE 4
Instruction (Classrooms/Lecture Halls)	Remote	TBD by campus	TBD by campus	In-person
Labs/Studios	Closed	TBD by campus	TBD by campus	TBD by campus
Libraries	Closed	TBD by campus	Open with strict physical distancing & enhanced cleaning; 50% capacity	Open at 100% capacity; routine cleaning
Study Abroad	Suspended	Suspended	Dependent on CDC guidelines	Dependent on CDC guidelines
Add rows as needed				
RESEARCH				
Campus Labs	Essential research only	Resume – partial with physical distancing & enhanced cleaning	Resume	Resume – full
Campus Offices	Essential personnel only	Open if telework not an option	Open with adaptations	Open
Field Research	Essential only	Resume with public health modifications and aligned with CDC/WHO travel restrictions	Continue with adaptations	Resume – full
Add rows as needed				
STUDENT HEALTH / OCCUPATIONAL HEALTH				
Non-Essential Care	Maximize telehealth modalities	Maximize telehealth modalities	Resume with adaptations	No restrictions
Employee Symptom Screening	As determined by campus	TBD by campus	TBD by campus	TBD by campus
Point of Entry Temperature Screening	As determined by campus	TBD by campus	TBD by campus	TBD by campus
WORKFORCE				
Return to Work	Telework; only essential employees on-site	Continue telework; return to work with adaptations (if telework is not an option)	Phased return to work	No restrictions
Special Accommodations	As determined	Strongly consider for vulnerable individuals	Strongly consider for vulnerable individuals	As needed
Add rows as needed				
UNIVERSITY-SPONSORED TRAVEL				
Essential Domestic	Limit	Limit	Resume	No restrictions
Essential International	Requires approval	Requires approval	Dependent on CDC guidelines	Dependent on CDC guidelines
Non-Essential Travel	Prohibited	TBD by campus	TBD by campus	Resume
Add rows as needed				
LARGE CAPACITY SPACES/VENUES (NON-ACADEMIC)				
Housing	Open with strict physical distancing	Open with strict physical distancing; occupancy TBD	Open with moderate physical distancing; occupancy TBD	Open
Dining Halls	To go only	To go only	Open with adaptations	Open

	STAGE 1	STAGE 2	STAGE 3	STAGE 4
Common Areas	Open with strict physical distancing; closed if distancing not feasible	Open with strict physical distancing; closed if distancing not feasible	Open with enhanced cleaning	Open with routine cleaning
Sporting Events/Venues	Closed	Closed	Open without live audience	Open with live audience
Gyms/Rec Sports Facilities	Closed	Closed	Open with strict physical distancing & enhanced cleaning	Open with routine cleaning
Large Gatherings	Per local health order	TBD by campus or local health authority	TBD by campus or local health authority	No restrictions
Add rows as needed				
OTHER				
Childcare Centers	Open for essential personnel only	Reopen with adaptations	Open with adaptations	Open
K-12	Remote	Reopen with adaptations	Open with adaptations	Open
Camps	Closed	TBD by campus	Open with physical distancing	Open
Construction	Per local health order	Active with physical distancing and monitoring	Active with physical distancing and monitoring	No restrictions
Add rows as needed				