

North Torrey Pines Living and Learning Neighborhood | Ridge Walk Academic Complex

Goals

- Address Enrollment Growth
- Integrate Living and Learning in one Community
- Permanent Home for Sixth College

Key Elements

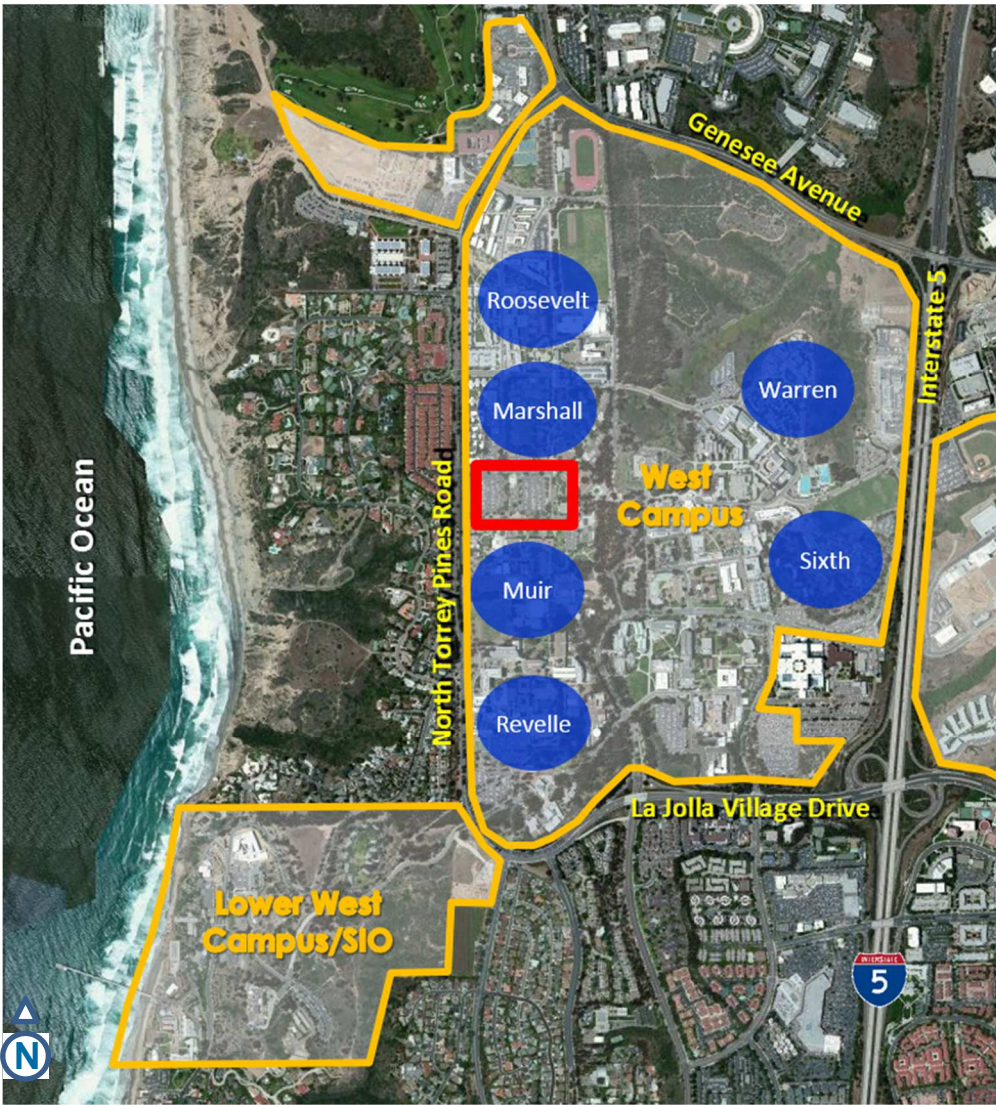
- 2,000 Undergraduate Beds + Residential Support
- General Assignment Classrooms
- Academic Space for Divisions of Social Sciences and Arts & Humanities



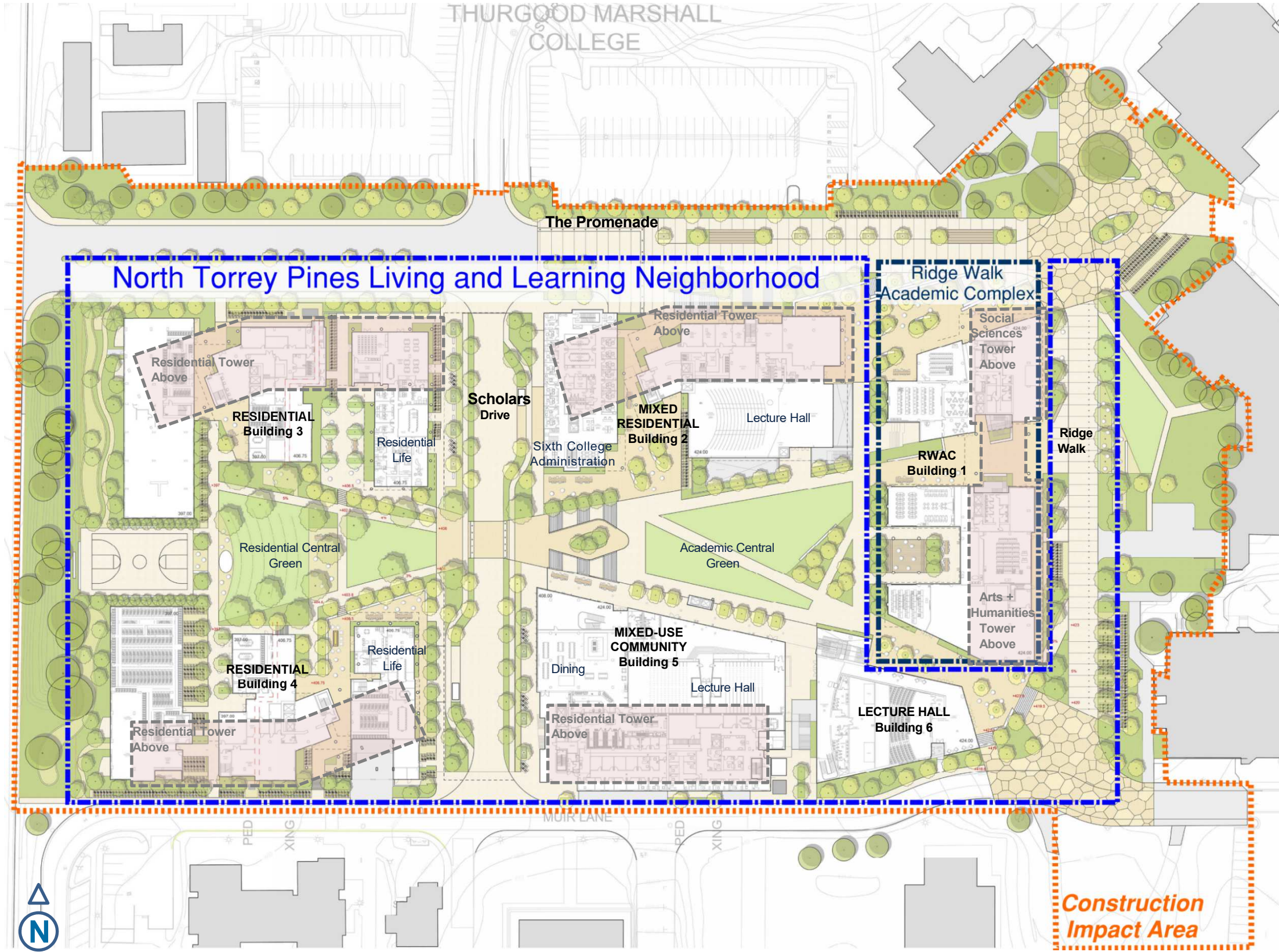
Regents Meeting – March 2018

Proposed Action: Approval of Design and EIR Certification

UC San Diego



Campus Context



Project Site Plan

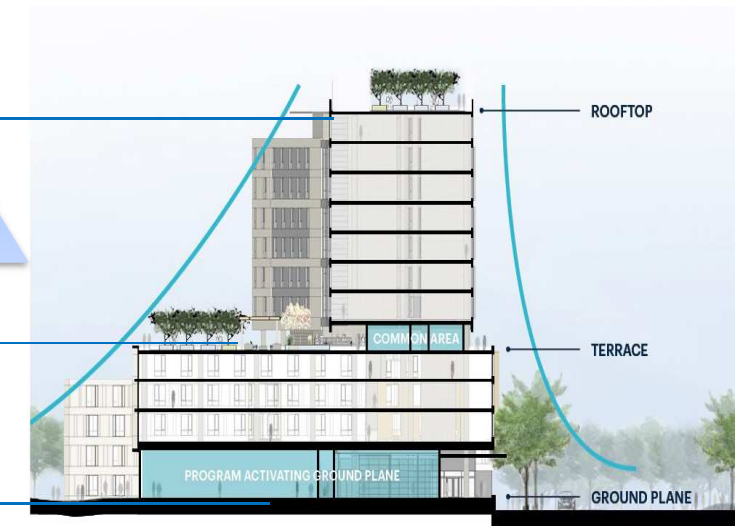


Section through site looking North

Private – Contemplative - Department

Semi-Private – Interactive - Community

Public – Activated - Neighborhood



Vertical Program Design Concept



Composite Metal Panel

Cementitious panel

Green Roof Terrace

Pre-Finished Aluminum windows

Wood effect phenolic resin panel

Integral color cement plaster

Type 1L Concrete

Articulated Cementitious panel

Promenade Entrance aligned with Geisel Library

Design and Materiality



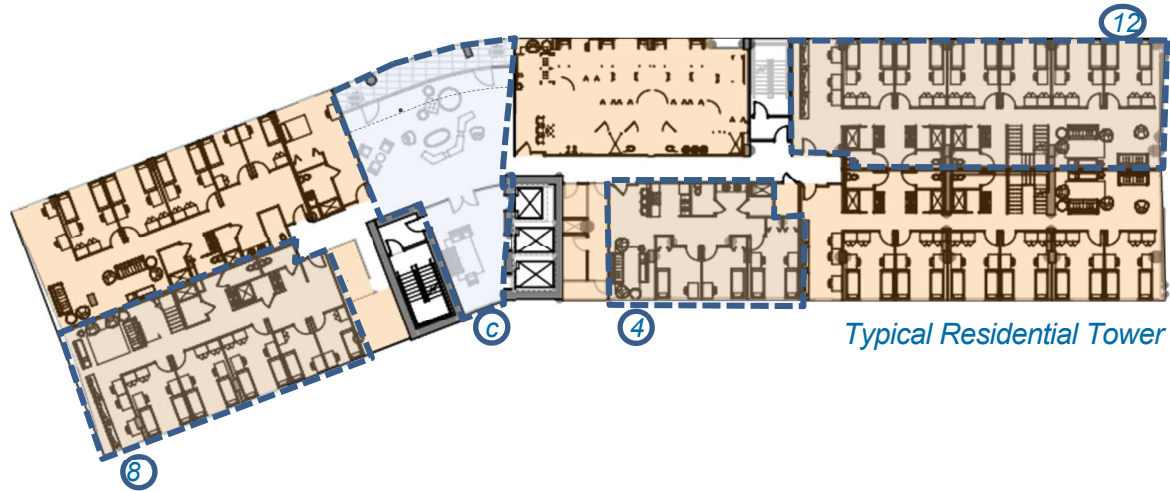
View from Torrey Pines at Muir College Drive



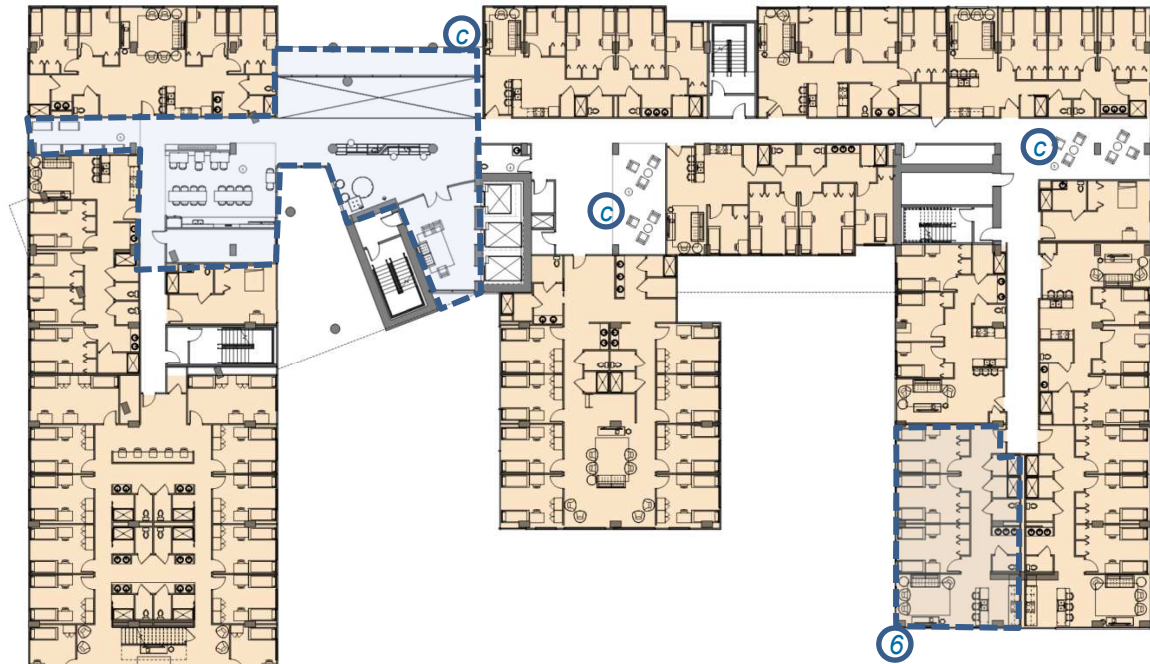
View from Scholars Drive



Communal spaces ③



Typical Residential Tower



Typical Residential Podium



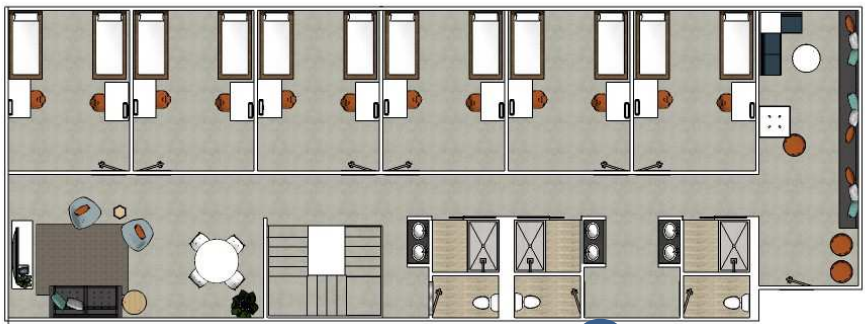
4-bed Apartment Unit ④



6-bed Apartment Unit ⑥



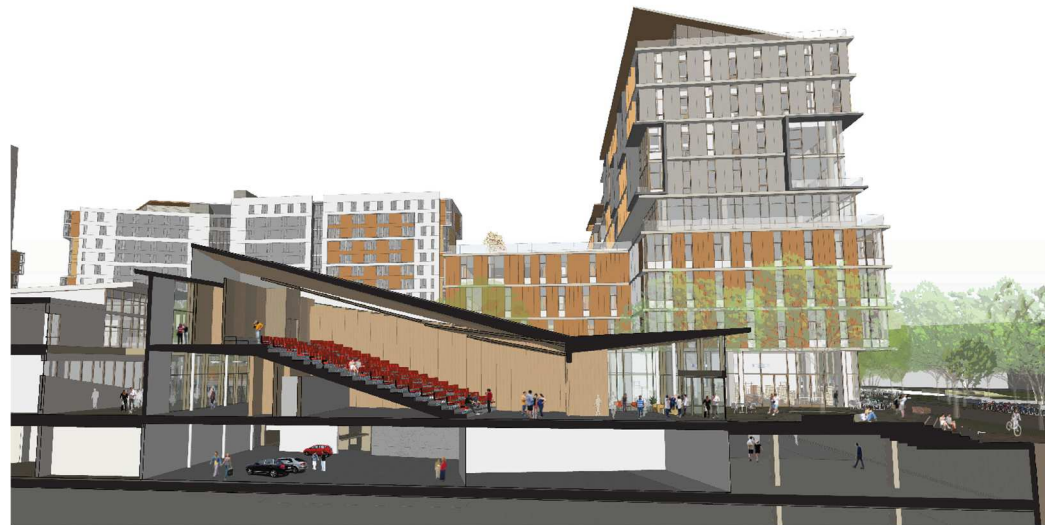
8-bed Suite Unit ⑧



12-bed Suite Unit ⑫

Four basic unit types (before variations)

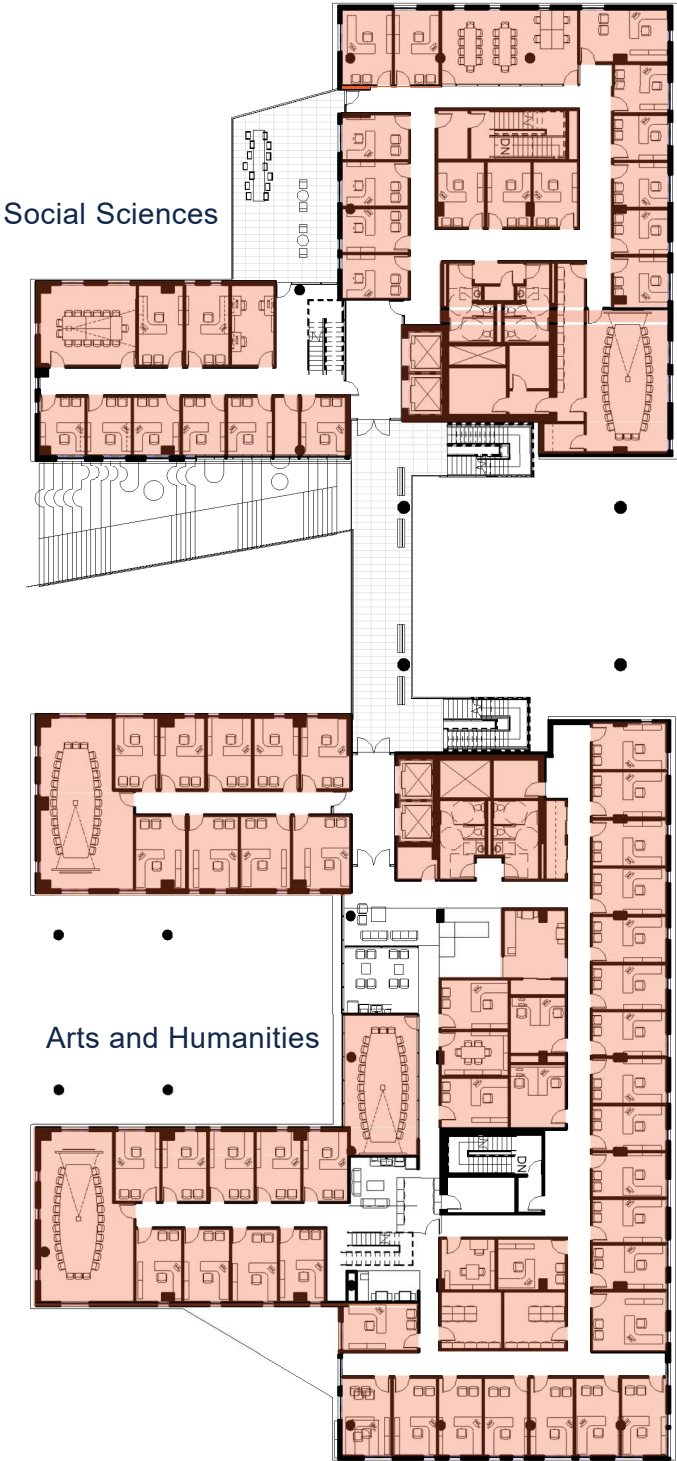
Residential Floor Plans



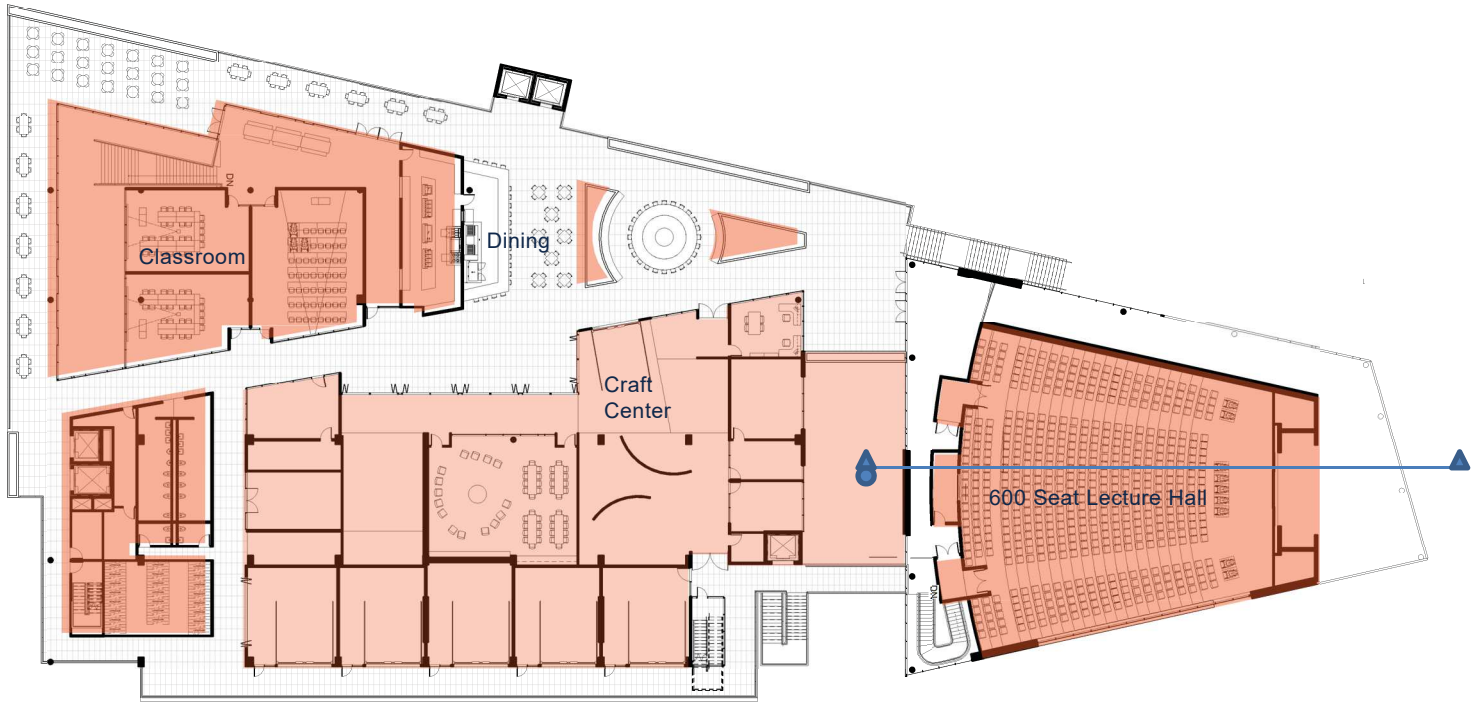
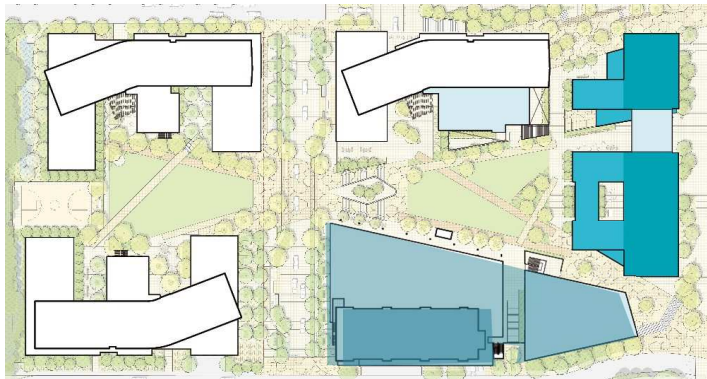
Section through Lecture Hall



RWAC Building from West



Academic Building Level 02



Community Buildings Terrace Level

RWAC and Community Building Floor Plans



Scholars Drive



Ridge Walk Southeast Entrance

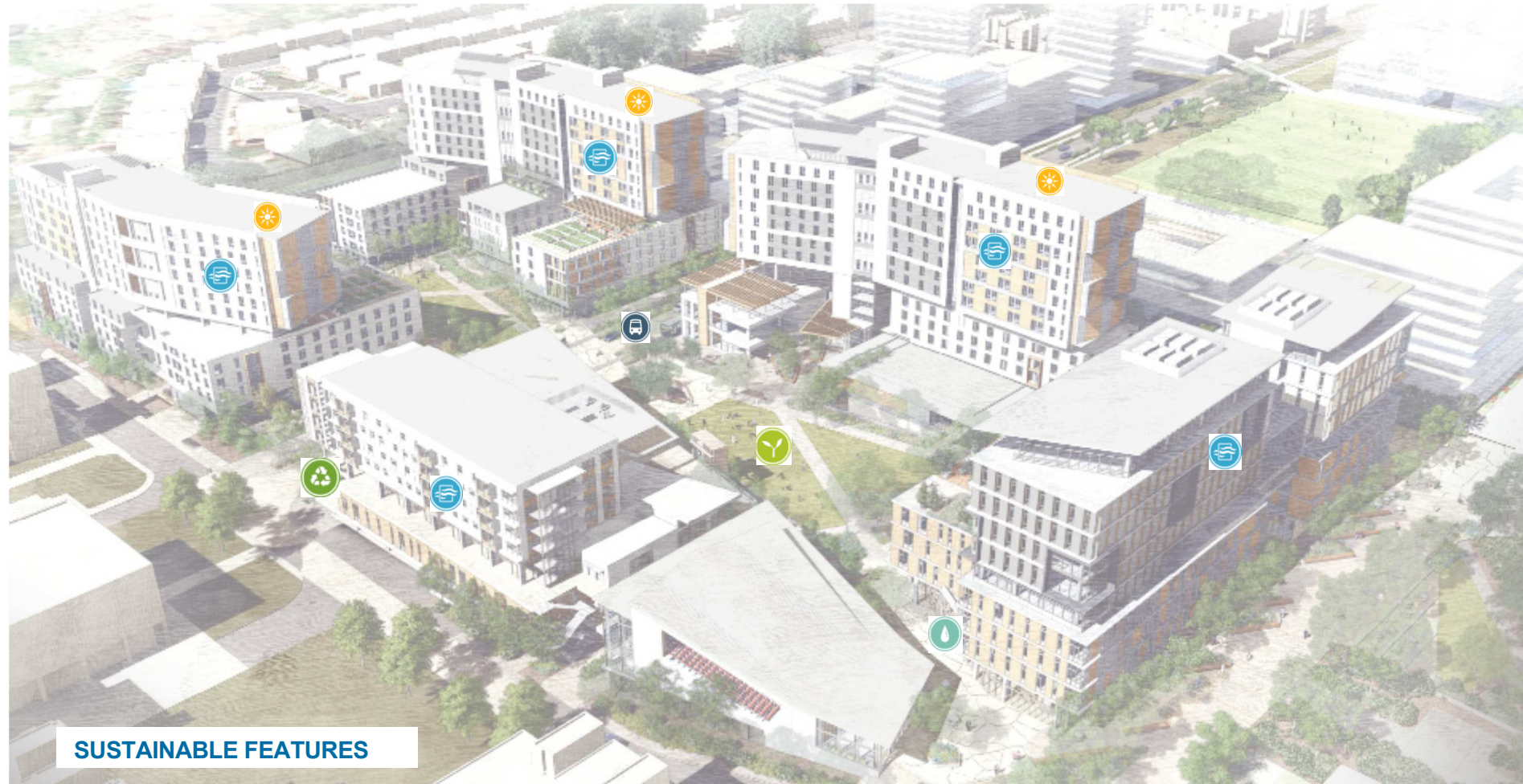


The Promenade



Ridge Walk at RWAC

Elements of Public Realm



SUSTAINABLE FEATURES

- Passive Solar Design
- Natural Ventilation
- Daylighting
- Drought resistant landscape
- Renewable Energy – 180 kWh PV System
- Anaerobic digester system
- High Performance HVAC
- Low power density lighting
- High efficiency fixtures
- Condensate recapture
- Connectivity
- Education Program
- Building Sustainability Dashboard



SUSTAINABLE METRICS

- Designed for LEED Platinum Certification
- Exceeds Title 24 by 30%
- Savings by Design incentives are anticipated at or above \$125,000
- The Average overall project EUI for all buildings is 40
- Parksmart Silver Certification
- Evaluating Well Building Silver Certification
- Utilizing the campus central plant energy efficient design keeps emissions very low.
- LCCA evaluated ROI to determine best value investment in sustainable strategies provided.
- Low overall ECI just above \$1/SF