

**Office of the President**

**TO MEMBERS OF THE COMMITTEE ON FINANCE:**

## **ACTION ITEM**

*For Meeting of July 18, 2012*

### **APPROVAL OF PROFESSIONAL DEGREE SUPPLEMENTAL TUITION LEVELS FOR 2012-13**

#### **EXECUTIVE SUMMARY**

In 2011-12, Professional Degree Supplemental Tuition (PDST) is charged to graduate students in 49 programs in 24 disciplines. For 2012-13, seven programs propose charging PDST for the first time: Applied Economics and Finance at Santa Cruz, Biotechnology Management at Irvine, Development Practice at Berkeley, Engineering Management at Irvine, Genetic Counseling at Irvine, Product Development at Berkeley, and Statistics at Berkeley. This item requests the Regents' approval of PDST levels for 2012-13 for all 57 programs,<sup>1</sup> pursuant to the Regents' *Policy on Professional Degree Supplemental Tuition* (the "Policy").<sup>2</sup>

#### **RECOMMENDATION**

The President, with the Provost's endorsement, recommends that the Committee on Finance recommend that the Regents approve the proposed Professional Degree Supplemental Tuition levels for 2012-13 for the 57 programs shown in Attachment 1.

#### **BACKGROUND**

Significant time and resources at the Office of the President, under the leadership of outgoing Provost Pitts, have been devoted over the last few years to improving the proposal and review process for PDST levels. A systemwide workgroup was convened for the first time in 2010 to assist Office of the President staff with updating the template completed by each program and identifying best practices for preparing submissions. In addition, compared to previous years, the most recently submitted multi-year plans have been subjected to a more rigorous preparation and review process.

---

<sup>1</sup> One program, Environmental Science and Engineering at UCLA, was formerly housed in the School of Public Health at UCLA. Effective July 1, 2012, this interdisciplinary program will move to the College of Letters and Science within the Division of Physical Sciences. This change realigns the management and accountability structure but has no impact on the academic content or the faculty teaching the courses for the degree. The program is not charging PDST for the first time in 2012-13 but is now listed as a program charging PDST that is distinct from Public Health at UCLA.

<sup>2</sup> Available at <http://www.universityofcalifornia.edu/regents/policies/3103.html>.

Each unit charging PDST must submit a multi-year plan to the Provost through its chancellor. Each multi-year plan is thoroughly reviewed by the Office of the President for the following information:

- the amount of resources required to sustain academic quality at, and enrollments in, the particular professional degree program;
- intended uses and justification for PDST revenue, including the educational benefits that will be provided to students;
- comparable public and private market comparisons of resident and nonresident tuition and fees, affordability goals, financial aid strategies, and student loan debt trends;
- racial, ethnic and socioeconomic student enrollment trends and unit diversity strategies; and
- information concerning the views of the unit's student body and faculty on the proposed PDST levels.

During the intensive multi-year plan review process, campuses must justify that proposed PDST increases will not adversely affect the University's commitment to access, inclusion, and keeping the door open for students interested in pursuing low-paying public interest careers. The Provost also ensures that each campus complements its proposed multi-year plans for PDST levels with financial aid measures, including scholarships, grants, and loan repayment assistance programs, to adequately meet these goals. In addition, programs must provide assurances that fees will remain at or below the total tuition and/or fees charged by comparable degree programs at other comparable public institutions.

Multi-year plans that did not include sufficient information or satisfactory plans on the above factors were required to reconsider efforts and submit revised proposals. Each of the PDST levels now before the Regents were submitted as part of multi-year plans as required by the Provost that have been subjected to rigorous review by Office of the President staff members and have met or exceeded the standards of the Provost. Therefore, the President, with the Provost's endorsement, is recommending that the Regents approve PDST levels for 57 programs, including approving PDST levels for 40 programs whose total charges for 2012-13 are projected to exceed the total estimated fees charged by comparable degree programs at comparable public institutions.<sup>3</sup>

### **PDST Increase Levels**

As seen in Attachment 2-A, programs propose PDST levels for resident students for 2012-13 that range from \$4,000 to \$38,548. The proposed percentage increases range from zero percent to 35 percent. Of the 57 programs that propose to charge PDST in 2012-13:

- Seven propose to charge the PDST for the first time;
- Seven programs propose charging no increases in PDST levels for resident students in 2012-13;
- Twenty-eight propose charging PDST levels for resident students with increases ranging from three percent to seven percent in 2012-13;

---

<sup>3</sup> The 40 programs include Theater, Film and Television at Los Angeles, for which there are no comparable public programs.

- Eight propose charging PDST levels for resident students with increases ranging from 7.1 percent to ten percent in 2012-13; and
- Seven propose charging PDST levels for resident students with increases of 10.1 percent or higher (up to 35 percent) for 2012-13.

The seven programs that propose charging PDST levels for resident students with increases of 10.1 percent or higher (up to 35 percent) for 2012-13 are:

- **Business** (Berkeley – 23 percent increase in 2012-13);
- **Nursing** (Davis, Irvine, Los Angeles, San Francisco – each proposes a 35 percent increase in 2012-13);
- **Optometry** (Berkeley – 12 percent increase in 2012-13); and
- **Theater, Film and Television** (Los Angeles – 10.1 percent increase in 2012-13).

The multi-year plans for programs proposing higher fee increases were given even greater scrutiny and review by the Provost and the Office of the President. An exceptional level of analysis was given to all elements of these programs' multi-year plans, particularly their strategies for increasing the enrollment of students from underrepresented groups and low-income backgrounds, their financial aid strategies and affordability goals, their information about the manageability of student loan debt, their revenue expenditure plans, their cost-cutting and fundraising efforts undertaken to avoid even higher PDST increases, and their student consultation process. Each of the program proposals has met or exceeded expectations of the Provost and Office of the President staff members.

UC's Nursing programs propose significant PDST increases for several reasons. For many years Nursing programs were asked by then-Governor Schwarzenegger to keep their PDST levels low while schools in other disciplines were permitted to increase their PDST levels at much higher rates; now, amidst the current fiscal crisis, nursing schools do not have the resources they need to maintain quality. In addition, the federal government had granted significant Workforce Investment Act funding to UC's nursing schools for five years to expand their programs; however, the federal government unexpectedly reduced the funding by more than half, leaving UC's programs without the resources to pay for students they had already enrolled.

As noted above, the Policy calls for the approval of PDST levels within the context of a multi-year plan. For the programs proposing to charge PDST for the first time in 2012-13 and for several other programs, 2012-13 represents year one of their three-year plans. For the remaining 43 programs, 2012-13 represents year two of their three-year plans. Proposed PDST levels for 2012-13, 2013-14 and, when applicable, 2013-14 can be found in Attachments 2-A and 2-B.

Regarding the 50 programs that charge PDST in 2011-12<sup>4</sup>, 14 programs<sup>5</sup> proposed resident PDST levels for 2012-13 that are different than those they had proposed in multi-year plans previously presented to the Regents. Five programs increased previously proposed 2012-13 PDST levels: the four Nursing programs propose increasing PDST for 2012-13 by approximately \$860 above what they proposed in November 2010 as part of a plan to bring resources in line

---

<sup>4</sup> Includes Environmental Science and Engineering at UCLA. See footnote 1 for more information.

<sup>5</sup> Figure does not include six programs that changed proposed PDST levels by less than three dollars.

with program needs; and the Business program at Berkeley proposes increasing its 2012-13 PDST level by over \$4,100 above what was proposed in November 2010, consistent with the program's goals of achieving market rate fees and reducing the difference between resident and nonresident PDST levels. Nine programs reduced the proposed amounts for 2012-13 PDST levels, citing concerns about reaching market, while Social Welfare at Berkeley reduced its 2012-13 PDST level proposal by \$120 because of unexpected increases in mandatory systemwide charges. Other market-related decreases ranged from about \$220 (Social Welfare at Los Angeles) to nearly \$2,200 (Dentistry at Los Angeles).

### **Market Comparisons**

The Policy requires that UC programs use marketplace analysis in pricing their programs, taking into consideration the tuition and fees charged by competitor institutions. Most programs consider both public and private competitors in their marketplace analyses. The comparison institutions chosen by UC's programs are generally the UC programs' current competitors for students, faculty, and national rankings; the programs' aspirational peers; or a mix of these two groups.

Professional school deans collaborated with their disciplinary colleagues on other campuses to identify, where possible, a common set of comparison institutions and to explain how these institutions were chosen. Programs in Law, Nursing, Pharmacy, and Social Welfare used the same set of public comparison institutions. Other programs, namely Business, Dentistry, Medicine, Public Health, and Public Policy, have chosen different comparison institutions due to differences in competition for students and program aspirations with respect to quality, outcomes, and national rankings. All programs (with the exception of Theater, Film and Television at Los Angeles, for which there are no comparable public programs) have identified comparison programs of high quality at public institutions across the nation for this analysis.

For 2012-13, 17 programs propose total charges that are expected to be at or below the total tuition and/or fees charged by comparable degree programs at other public institutions. Forty programs propose total charges expected to be above the total tuition and/or fees charged by comparable degree programs at other public institutions.

In many instances those 40 professional degree programs compete most closely with private, not public, institutions for students, faculty, and national rankings. For 27 of these 40 programs, UC programs' 2011-12 total charges already exceeded the charges at their public comparison institutions;<sup>6</sup> their 2012-13 total resident charges are still expected to exceed those of their comparators. Of the remaining 40 programs that propose total resident charges above the total resident charges at their public comparator institutions:

- four programs propose charging PDST for the first time in 2012-13 (Applied Economics and Finance at Santa Cruz, Development Practice at Berkeley, Engineering Management at Irvine, and Genetic Counseling at Irvine); and

---

<sup>6</sup> These 27 programs include Environmental Science and Engineering at UCLA (see footnote 1 for more information) and Theater, Film and Television at UCLA. The degree to which these 27 programs' total charges already exceeded the charges at their public comparison institutions can be seen in Display 8 in Item F11 at the November 2010 meeting of the Board, available at <http://www.universityofcalifornia.edu/regents/regmeet/nov10/f11.pdf>.

- nine programs did not propose total charges that were expected to exceed those of their public comparators in 2011-12 but do so for 2012-13. Of those nine programs, five propose notable PDST increases for 2012-13 (Business at Berkeley and the four Nursing programs). Total charges for the remaining four programs (Environmental Design at Berkeley, and Medicine at Berkeley, San Diego and San Francisco) were not significantly below those of their public comparators in 2011-12 and did not require large fee increases in 2012-13 to push their total charges above those of their comparators for 2012-13.

Proposed total resident charges for UC students and projected 2012-13 total resident charges at UC programs' public comparison institutions are shown in Attachment 3. Because the recently enacted State budget calls for UC to avoid a tuition increase in 2012-13, proposed total resident charges for UC students in this attachment do not reflect an increase in mandatory systemwide charges (i.e., Tuition and the Student Services Fee) for 2012-13.

It is important to note when considering total charges for UC's professional programs that UC and the State are in the middle of one of the worst fiscal crises in UC's history. UC programs have experienced funding shortfalls, in large part due to decreases in State funding, as well as the increase of mandatory costs at a rapid rate. UC's professional programs believe that it is critical to maintain the quality of these programs, and the PDST increases as proposed will allow the programs to do this.

The discussion above concerns total charges for UC's programs as compared to the average total charges at public comparison programs. When compared to the average total charges at *both public and private* comparison programs, 54 of the 57 programs proposing to charge PDST in 2012-13 would be below the average. Such a comparison to both public and private programs is entirely appropriate based on quality and competition for students, faculty and research support. Based on data provided by the campuses, total charges for only three UC programs would exceed the average total charges at both public and private comparison programs. Two of those programs (Veterinary Medicine and Preventive Veterinary Medicine at Davis) do not have private comparison programs; the third program (Health Informatics at Davis) named only one private comparison program, and its total charges are anticipated to be less than those of the Davis program in 2012-13.

### **New Programs**

As discussed above, over the past few years all programs' multi-year plans were subjected to a more rigorous preparation and review process than in previous years. Programs proposing to charge PDST for the first time in 2012-13 were subjected to a particularly heightened review process spanning over one year; programs' initial proposals to charge PDST were first evaluated by the Office of the President beginning in March 2011. These programs also addressed many supplemental questions specific to new PDST charges including the appropriateness of charging PDST, why the program is "professional" rather than "academic" or "self-supporting," and elevated earning potential of students who earn a degree in the discipline.

Among the 57 programs that propose charging PDST in 2012-13, seven programs propose charging PDST for the first time. The review process designed by the Provost ensured that it is appropriate for these programs to be called "professional" and therefore they are eligible to

charge PDST. In addition, any necessary campus and systemwide program approvals have been obtained. Finally, as is the case for all programs proposing to charge PDST in 2012-13, these seven programs addressed all aspects of the Policy in their multi-year plans and were subjected to a thorough review, including a high level of review of affordability, accessibility and diversity measures.

Brief descriptions of the seven programs proposing to charge PDST for the first time in 2012-13 follow.

- **Applied Economics and Finance** (Santa Cruz). The Master of Science program in Applied Economics and Finance at Santa Cruz is an existing program for which admissions have been temporarily suspended while the curriculum is revised from a two-year to a one-year program, which brings it more in line with comparison programs at other institutions. The program will provide one year of analytical graduate training that prepares students for careers in business, international and domestic banking, consulting, government, and the nonprofit arena. The program will have a more applied orientation than the typical M.A. program in Economics and provide more training in economics, statistics, and econometrics than most M.B.A. programs. Students in the revised program would benefit from four critical program aspects that will be supported by PDST revenue: a strengthened core curriculum, a tailored emphasis on empirical analysis, availability of student financial aid, and expanded student services.
- **Biotechnology Management** (Irvine). The Master of Science in Biotechnology Management (MSBTM) is a new program that combines the essential elements of Irvine's highly successful Biotechnology Master's Program with those of several equally successful M.B.A. programs, as well as capitalizes on a defined area of campus research strength in nanotechnology, tissue engineering and biomedical devices. The new degree will prepare scientists for leadership roles in biotechnology, pharmaceutical, and biomedical device-based companies and organizations through a curriculum comprised of existing courses in biotechnology, management, and biomedical engineering. PDST revenue would be used to develop, staff and oversee several courses and a teaching laboratory; would allow the students to participate in independent research; would aid in recruiting high-quality students; would provide financial aid to qualified students who may not otherwise be able to enroll; and would support administrative salaries.
- **Development Practice** (Berkeley). The Master of Development Practice program is a new program established with several similar programs at other universities with the support of the MacArthur Foundation in order to develop a global network of education in the area of development practice. Viewed by some as "an M.B.A. in Sustainable Development," the program will prepare generalist development practitioners to meet and manage current and future economic, social, health, and environmental challenges, combining solid scientific training with practical skills. The program will emphasize mentorship, field study, leadership skills, project management, and policy formation. PDST revenue would support new courses, a six- to eight-week "bootcamp" to prepare incoming students, internships, and financial aid.

- **Engineering Management** (Irvine). The Master of Science in Engineering Management is a new ten-month joint program offered by the School of Business and the School of Engineering which prepares engineers for leadership roles in engineering management, technology, and science by providing them with advanced scientific training and a strong groundwork in business and management. PDST revenue would be used to support courses, student advising, career planning and placement, and financial aid for students.
- **Genetic Counseling** (Irvine). The Graduate Program in Genetic Counseling trains professionals who help people understand and adapt to the implications of genetic diseases, incorporating the dramatic advances in genomic technology, as the roles of genetic counselors expand to delivery of health care across the lifespan. The two-year program was founded at UC Irvine in 1973 and is accredited by the American Board of Genetic Counseling (ABGC). PDST revenue would be used to support salaries for the non-FTE genetic counseling faculty who provide academic instruction and clinical supervision, support non-salary program expenses that enhance the ability of the students to enter the genetic counseling profession, and support students above and beyond the 33 percent return-to-aid required by Policy.
- **Product Development** (Berkeley). Berkeley's Product Development Program (PDP) is an existing terminal Master of Science degree concentration of its graduate master's program in chemical engineering; PDP is housed in the College of Chemistry, which is comprised of the Department of Chemistry and the Department of Chemical and Biomolecular Engineering. The central objective of the PDP is to fill the unmet need at the national and international levels for professionals with chemical engineering and related backgrounds who have knowledge and field experience in the complex process of transforming innovations into commercially successful products. PDST revenue would be used to build and maintain the program's unique curriculum and field project component, as well as to provide comprehensive and robust career development services for the program's students. Without PDST revenue the College of Chemistry would terminate the PDP as an active program.
- **Statistics** (Berkeley). The Master of Arts in Statistics program offered by the Department of Statistics is an existing degree program that would feature an enhanced curriculum with a dedicated focus on the technical and computational skills applied by professional statisticians. PDST revenue would maintain the quality of the program, allow the department to enroll more of the qualified students who apply for admission, prepare students to meet society's need for highly trained government and industry statisticians, and attract and retain highly qualified faculty members.

#### **Uses of Proposed PDST Increase Revenue**

As part of their multi-year plans, programs submitted three-year plans for how they plan to use the revenue generated by PDST increases. Using expenditure categories provided by the Office of the President, the 57 programs proposing to charge PDST in 2012-13 anticipate spending PDST increase money as shown in Display 1.

---

**DISPLAY 1: Projected Expenditures of Professional Degree Supplemental Tuition Increase Revenue, 2012-13**

<u>Expenditure Category</u>	<u>Share of Revenue</u>
Providing Additional Student Financial Aid	36.6%
Improving the Student-Faculty Ratio	11.7%
Faculty Salary Adjustments	11.7%
Expanding Instructional Support Staff	8.5%
UCRP Contributions	6.0%
Benefits Cost Increases	5.2%
Facilities Expansion/Renewal	5.1%
Other Non-salary Cost Increases	4.9%
Program Enhancements	4.7%
Instructional Equipment Purchases	3.7%
<u>Other</u>	<u>1.9%</u>
Total	100.0%

---

**Financial Aid and Student Indebtedness**

Programs demonstrated a commitment to providing students with grant and scholarship support in order to attract and enroll a highly talented and socioeconomically diverse student body, consistent with the financial aid policy goals first articulated by the Regents in 1994. Each of the 57 programs proposing to charge PDST in 2012-13 has committed to meeting the requirements for financial aid specified in the Policy – i.e., each program plans to supplement financial aid sources by an amount equivalent to at least 33 percent of new PDST revenue, or provide financial aid in an amount equivalent to at least 33 percent of all PDST revenue. Many programs anticipate exceeding this 33 percent return-to-aid level. In addition, each program currently charging PDST has been evaluating the impact of PDST increases on access and inclusion and has reported in its multi-year plan on changes in the demographic mixture of the students who enroll.

Although access is a universal goal, grants and scholarships are insufficient to cover the full cost of attendance. Loans are therefore a necessary and significant component to financial aid packages. As at other institutions, debt has increased in recent years for graduates of UC's professional degree programs. The average real student loan debt at graduation among graduates of UC's professional disciplines was 11 percent higher in 2010-11 than in 2006-07. As at other institutions, students in Medicine, Dentistry and Law borrow more than students with lower earning potential (e.g., Social Welfare).

Fortunately, there are a number of approaches students can take to manage their debt at graduation. Some professions have exceptionally high earnings potential, such as Business, Law, Medicine, and Dentistry, which make debt repayment affordable. Across all Business programs, for example, repayment of student loan debt requires, on average, a manageable nine percent of starting salaries, assuming a standard ten-year repayment plan. In some disciplines, students also have the option to participate in federal, State, or University loan repayment assistance plans (LRAPs). Programs in the health sciences, while not offering such programs themselves, cited various federal programs that provide loan repayment assistance to physicians and other health practitioners who serve medically underserved populations. Students can also take advantage of

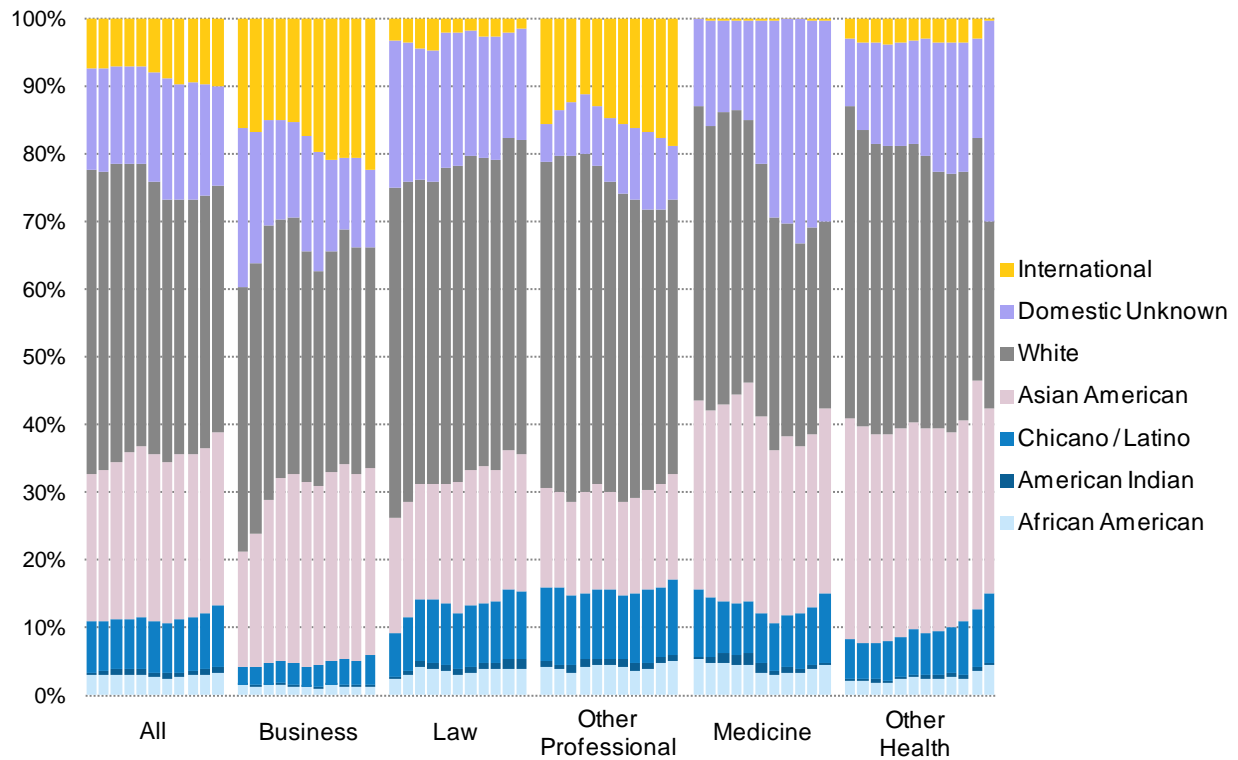


the recently introduced Income-Based Repayment plan (IBR) for federal student loans, which is designed to make loan repayments easier for students who take jobs with lower salaries.

**Strategy for Inclusion of Underrepresented Groups**

Programs report on several factors relating to enrollment trends and diversity strategies. Programs and the Office of the President reviewed racial, ethnic and socioeconomic enrollment trends and comparable data from peer institutions. Diversity strategies for all of the programs were also reviewed, and campuses received direct feedback on their strategies for inclusion of underrepresented groups. Display 2 shows racial and ethnic distribution of graduate professional degree students at UC from Fall 2001 to 2011. Altogether, students from underrepresented groups constituted 13.2 percent of all professional degree students in 2010-11 compared to 11.2 percent in 2000-01. UC's Business programs have the lowest percentage of underrepresented minorities (six percent). The Berkeley and Los Angeles campuses successfully rejoined the Consortium for Graduate Study in Management in 2009, a non-profit organization dedicated to increasing the number of underrepresented minority students in business schools and the business community. Since rejoining the Consortium, underrepresented minority enrollment at Berkeley's Haas School of Business has increased from 4.9 percent to ten percent over the last year, and underrepresented minority applications increased 44 percent in 2012. In addition, with encouragement and support from Provost Pitts, UC has developed the Summer Institute for Emerging Managers and Leaders, which provides an intensive two-week training to first- and second-year students from historically black colleges and universities (HBCUs).

DISPLAY 2: Racial/Ethnic Distribution of Graduate Professional Degree Students by Discipline, Universitywide, Fall 2001 to 2011



Source: UC Corporate Student System

(a) "Other Health" includes Dentistry, Nursing, Optometry, Pharmacy, Public Health, and Veterinary Medicine. Medical residents are not included.

(b) "Other Professional" includes programs such as Architecture, Public Policy, Social Welfare, and other small programs.

### **Faculty and Student Consultation**

Programs seek a range of feedback from students and faculty. Consultation methods vary by campus and program. Each multi-year plan described efforts to solicit student and faculty input on the proposed PDST increases. Feedback was typically obtained in meetings with deans and school administrators and through letters or e-mails addressed to school administrators. Some programs included student focus groups and/or communication with prospective students. In general, students have expressed concern over the potential impact of the proposed PDST increases on diversity, on access, on student debt, and on restricting the career paths of those interested in pursuing public interest careers. The consultation process has provided an opportunity for students to engage in a dialogue with program leadership about multi-year plans and the necessity of the PDST increases, which will expand resources for financial aid and additional outreach and support to underrepresented students. In addition, this year Provost Pitts has required that all proposals and proposal revisions be shared with the campus graduate student association/assembly president to ensure that a broader group of students has access to the full range of proposals.

(Attachments)

---

**Attachment 1: 2012-13 Proposed Professional Degree Supplemental Tuition Levels**

	Residents	Nonresidents (a)
<b>Applied Economics and Finance</b>		
Santa Cruz	\$8,001 (b)	\$8,001 (b)
<b>Architecture</b>		
Los Angeles	\$8,000 (b)	\$8,000 (b)
<b>Art (M.F.A.)</b>		
Los Angeles	\$8,478 (b)	\$5,298 (b)
<b>Biotechnology Management</b>		
Irvine	\$12,000	\$11,160
<b>Business</b>		
Berkeley	\$38,548 (b)	\$28,850 (b)
Davis	\$23,340	\$23,340
Irvine	\$22,881	\$19,275
Los Angeles	\$32,384	\$26,426
Riverside	\$22,848	\$22,848
San Diego	\$27,117	\$19,761
<b>Dental Hygiene</b>		
San Francisco	\$13,206	\$13,206
<b>Dentistry</b>		
Los Angeles	\$24,160	\$21,116
San Francisco	\$27,576 (b)	\$27,576 (b)
<b>Development Practice</b>		
Berkeley	\$18,384 (b)	\$18,384 (b)
<b>Educational Leadership</b>		
Davis	\$4,200 (b)	\$4,200 (b)
<b>Engineering (M.Eng.)</b>		
Berkeley	\$32,400 (b)	\$23,760 (b)
<b>Engineering Management</b>		
Irvine	\$12,000 (b)	\$12,000 (b)
<b>Environmental Design</b>		
Berkeley	\$6,300 (b)	\$6,300 (b)
<b>Environmental Science and Engineering</b>		
Los Angeles	\$7,200 (b)	\$7,656 (b)
<b>Genetic Counseling</b>		
Irvine	\$9,000 (b)	\$9,000 (b)
<b>Health Informatics</b>		
Davis	\$6,420 (b)	\$6,420 (b)
<b>Information Management</b>		
Berkeley	\$6,800 (b)	\$6,800 (b)
<b>International Relations and Pacific Studies</b>		
San Diego	\$7,596	\$7,596
<b>Law</b>		
Berkeley	\$35,164	\$26,870
Davis	\$34,182	\$31,188
Irvine	\$31,755	\$26,004
Los Angeles	\$31,755	\$26,004

(a) Some schools have opted to set PDST levels for *nonresident* students lower than those for *resident* students in the same program in acknowledgement of the \$12,245 in Nonresident Supplemental Tuition that nonresident students must pay in addition to mandatory systemwide charges and PDST. Total charges for nonresident students continue to be significantly above those for resident students.

(b) Where noted, total charges for these programs are expected to exceed the total tuition and/or fees charged by public comparison programs in 2012-13.

(c) There are no comparable public programs for Theater, Film, and Television at Los Angeles.

---

(continued)

---

---

**Attachment 1: 2012-13 Proposed Professional Degree Supplemental Tuition Levels (continued)**

	Residents	Nonresidents (a)
<b>Medicine</b>		
Berkeley (Jt. MD/MS)	\$19,914 (b)	\$19,914 (b)
Davis	\$19,914 (b)	\$19,914 (b)
Irvine	\$19,914 (b)	\$19,914 (b)
Los Angeles	\$19,914	\$19,914
Riverside	\$19,914	\$19,914
San Diego	\$19,914 (b)	\$19,914 (b)
San Francisco	\$19,914 (b)	\$19,914 (b)
<b>Nursing</b>		
Davis	\$7,740 (b)	\$7,740 (b)
Irvine	\$7,740 (b)	\$7,740 (b)
Los Angeles	\$7,740 (b)	\$7,740 (b)
San Francisco	\$7,740 (b)	\$7,740 (b)
<b>Optometry</b>		
Berkeley	\$16,436 (b)	\$16,436 (b)
<b>Pharmacy</b>		
San Diego	\$19,638 (b)	\$19,638 (b)
San Francisco	\$19,638 (b)	\$19,638 (b)
<b>Physical Therapy</b>		
San Francisco	\$12,597 (b)	\$12,954 (b)
<b>Preventive Veterinary Medicine</b>		
Davis	\$5,742 (b)	\$6,198 (b)
<b>Product Development</b>		
Berkeley	\$22,000	\$16,000
<b>Public Health</b>		
Berkeley	\$7,232 (b)	\$7,232 (b)
Davis	\$7,200 (b)	\$7,656 (b)
Irvine	\$5,613 (b)	\$5,613 (b)
Los Angeles	\$7,200 (b)	\$7,656 (b)
<b>Public Policy</b>		
Berkeley	\$8,020 (b)	\$8,522 (b)
Irvine	\$5,952 (b)	\$5,952 (b)
Los Angeles	\$7,288 (b)	\$7,775 (b)
<b>Social Welfare</b>		
Berkeley	\$4,000 (b)	\$4,000 (b)
Los Angeles	\$5,730 (b)	\$6,150 (b)
<b>Statistics</b>		
Berkeley	\$15,000	\$15,000
<b>Theater, Film, and Television</b>		
Los Angeles	\$9,534 (c)	\$9,534 (c)
<b>Urban Planning</b>		
Los Angeles	\$5,952 (b)	\$6,390 (b)
<b>Veterinary Medicine</b>		
Davis	\$15,216 (b)	\$15,216 (b)

(a) Some schools have opted to set PDST levels for *nonresident* students lower than those for *resident* students in the same program in acknowledgement of the \$12,245 in Nonresident Supplemental Tuition that nonresident students must pay in addition to mandatory systemwide charges and PDST. Total charges for nonresident students continue to be significantly above those for resident students.

(b) Where noted, total charges for these programs are expected to exceed the total tuition and/or fees charged by public comparison programs in 2012-13.

(c) There are no comparable public programs for Theater, Film, and Television at Los Angeles.

---

**Attachment 2-A: Multi-Year Professional Degree Supplemental Tuition Levels – Residents (a)**

	2011-12 PDST	2012-13 PDST	2013-14 PDST	2014-15 PDST	2012-13 increase	2013-14 increase	2014-15 increase
<b>Applied Economics and Finance</b>							
Santa Cruz	n/a	\$ 8,001	\$ 8,325	\$ 8,658	n/a	4.0%	4.0%
<b>Architecture</b>							
Los Angeles	\$ 8,000	\$ 8,000	\$ 8,560	\$ 9,159	0.0%	7.0%	7.0%
<b>Art (M.F.A.)</b>							
Los Angeles	\$ 8,000	\$ 8,478	\$ 8,985	\$ 9,522	6.0%	6.0%	6.0%
<b>Biotechnology Management</b>							
Irvine	n/a	\$ 12,000	\$ 12,840	\$ 13,740	n/a	7.0%	7.0%
<b>Business</b>							
Berkeley	\$ 31,430	\$ 38,548	\$ 40,834	\$ 43,324	22.6%	5.9%	6.1%
Davis	\$ 22,176	\$ 23,340	\$ 24,741	(b)	5.2%	6.0%	(b)
Irvine	\$ 21,384	\$ 22,881	\$ 24,483	(b)	7.0%	7.0%	(b)
Los Angeles	\$ 29,717	\$ 32,384	\$ 34,003	\$ 35,703	9.0%	5.0%	5.0%
Riverside	\$ 21,354	\$ 22,848	\$ 24,444	\$ 26,157	7.0%	7.0%	7.0%
San Diego	\$ 25,824	\$ 27,117	\$ 28,473	\$ 29,895	5.0%	5.0%	5.0%
<b>Dental Hygiene</b>							
San Francisco	\$ 12,036	\$ 13,206	\$ 14,298	(b)	9.7%	8.3%	(b)
<b>Dentistry</b>							
Los Angeles	\$ 24,160	\$ 24,160	\$ 26,094	\$ 28,180	0.0%	8.0%	8.0%
San Francisco	\$ 25,068	\$ 27,576	\$ 30,336	(b)	10.0%	10.0%	(b)
<b>Development Practice</b>							
Berkeley	n/a	\$ 18,384	\$ 18,600	\$ 18,984	n/a	1.2%	2.1%
<b>Educational Leadership</b>							
Davis	\$ 4,002	\$ 4,200	\$ 4,410	(b)	4.9%	5.0%	(b)
<b>Engineering (M.Eng.)</b>							
Berkeley	\$ 30,000	\$ 32,400	\$ 34,990	(b)	8.0%	8.0%	(b)
<b>Engineering Management</b>							
Irvine	n/a	\$ 12,000	\$ 12,840	\$ 13,740	n/a	7.0%	7.0%
<b>Environmental Design</b>							
Berkeley	\$ 6,000	\$ 6,300	\$ 6,616	(b)	5.0%	5.0%	(b)
<b>Environmental Science and Engineering</b>							
Los Angeles	\$ 6,811	\$ 7,200	\$ 7,740	\$ 8,321	5.7%	7.5%	7.5%
<b>Genetic Counseling</b>							
Irvine	n/a	\$ 9,000	\$ 9,900	\$ 10,890	n/a	10.0%	10.0%
<b>Health Informatics</b>							
Davis	\$ 6,000	\$ 6,420	\$ 6,870	(b)	7.0%	7.0%	(b)
<b>Information Management</b>							
Berkeley	\$ 6,400	\$ 6,800	\$ 7,200	(b)	6.3%	5.9%	(b)
<b>International Relations and Pacific Studies</b>							
San Diego	\$ 7,098	\$ 7,596	\$ 8,127	(b)	7.0%	7.0%	(b)
<b>Law</b>							
Berkeley	\$ 35,148	\$ 35,164	\$ 36,596	(b)	0.0%	4.0%	(b)
Davis	\$ 31,218	\$ 34,182	\$ 37,260	(b)	9.5%	9.0%	(b)
Irvine	\$ 29,404	\$ 31,755	\$ 33,343	(b)	8.0%	5.0%	(b)
Los Angeles	\$ 29,404	\$ 31,755	\$ 33,343	\$ 35,010	8.0%	5.0%	5.0%

Note: Red type indicates PDST increases above 6%.

(a) Some schools have opted to set PDST levels for *nonresident* students lower than those for *resident* students in the same program in acknowledgement of the \$12,245 in Nonresident Supplemental Tuition that nonresident students must pay in addition to mandatory systemwide charges and PDST. Total charges for nonresident students continue to be significantly above those for resident students.

(b) Where noted, 2012-13 and 2013-14 represent years two and three, respectively, of the program's multi-year plan; thus PDST levels are not available for 2014-15.

(continued)

**Attachment 2-A: Multi-Year Professional Degree Supplemental Tuition Levels – Residents (a) (continued)**

	2011-12 PDST	2012-13 PDST	2013-14 PDST	2014-15 PDST	2012-13 increase	2013-14 increase	2014-15 increase
<b>Medicine</b>							
Berkeley (Jt. MD/MS)	\$ 18,636	\$ 19,914	\$ 21,282	(b)	6.9%	6.9%	(b)
Davis	\$ 18,636	\$ 19,914	\$ 21,282	(b)	6.9%	6.9%	(b)
Irvine	\$ 18,636	\$ 19,914	\$ 21,282	(b)	6.9%	6.9%	(b)
Los Angeles	\$ 18,636	\$ 19,914	\$ 21,282	\$ 22,745	6.9%	6.9%	6.9%
Riverside	\$ 18,636	\$ 19,914	\$ 21,282	(b)	6.9%	6.9%	(b)
San Diego	\$ 18,636	\$ 19,914	\$ 21,282	(b)	6.9%	6.9%	(b)
San Francisco	\$ 18,636	\$ 19,914	\$ 21,282	(b)	6.9%	6.9%	(b)
<b>Nursing</b>							
Davis	\$ 5,730	\$ 7,740	\$ 10,440	\$ 14,100	35.1%	34.9%	35.1%
Irvine	\$ 5,730	\$ 7,740	\$ 10,440	\$ 14,100	35.1%	34.9%	35.1%
Los Angeles	\$ 5,730	\$ 7,740	\$ 10,449	\$ 14,106	35.1%	35.0%	35.0%
San Francisco	\$ 5,730	\$ 7,740	\$ 10,440	\$ 14,100	35.1%	34.9%	35.1%
<b>Optometry</b>							
Berkeley	\$ 14,674	\$ 16,436	\$ 18,408	(b)	12.0%	12.0%	(b)
<b>Pharmacy</b>							
San Diego	\$ 18,354	\$ 19,638	\$ 21,012	(b)	7.0%	7.0%	(b)
San Francisco	\$ 18,354	\$ 19,638	\$ 21,012	(b)	7.0%	7.0%	(b)
<b>Physical Therapy</b>							
San Francisco	\$ 11,772	\$ 12,597	\$ 13,476	(b)	7.0%	7.0%	(b)
<b>Preventive Veterinary Medicine</b>							
Davis	\$ 5,742	\$ 5,742	\$ 6,030	(b)	0.0%	5.0%	(b)
<b>Product Development</b>							
Berkeley	n/a	\$ 22,000	\$ 22,000	\$ 24,000	n/a	0.0%	9.1%
<b>Public Health</b>							
Berkeley	\$ 6,758	\$ 7,232	\$ 7,740	(b)	7.0%	7.0%	(b)
Davis	\$ 6,810	\$ 7,200	\$ 7,620	(b)	5.7%	5.8%	(b)
Irvine	\$ 5,612	\$ 5,613	\$ 5,613	(b)	0.0%	0.0%	(b)
Los Angeles	\$ 6,811	\$ 7,200	\$ 7,617	\$ 8,074	5.7%	5.8%	6.0%
<b>Public Policy</b>							
Berkeley	\$ 7,290	\$ 8,020	\$ 8,822	(b)	10.0%	10.0%	(b)
Irvine	\$ 5,563	\$ 5,952	\$ 6,369	(b)	7.0%	7.0%	(b)
Los Angeles	\$ 6,811	\$ 7,288	\$ 7,797	\$ 8,343	7.0%	7.0%	7.0%
<b>Social Welfare</b>							
Berkeley	\$ 4,000	\$ 4,000	\$ 4,200	(b)	0.0%	5.0%	(b)
Los Angeles	\$ 5,563	\$ 5,730	\$ 5,958	\$ 6,195	3.0%	4.0%	4.0%
<b>Statistics</b>							
Berkeley	n/a	\$ 15,000	\$ 16,500	\$ 18,100	n/a	10.0%	9.7%
<b>Theater, Film, and Television</b>							
Los Angeles	\$ 8,659	\$ 9,534	\$ 10,496	\$ 11,546	10.1%	10.1%	10.0%
<b>Urban Planning</b>							
Los Angeles	\$ 5,563	\$ 5,952	\$ 6,369	\$ 6,816	7.0%	7.0%	7.0%
<b>Veterinary Medicine</b>							
Davis	\$ 15,216	\$ 15,216	\$ 15,977	(b)	0.0%	5.0%	(b)

Note: Red type indicates PDST increases above 6%.

(a) Some schools have opted to set PDST levels for *nonresident* students lower than those for *resident* students in the same program in acknowledgement of the \$12,245 in Nonresident Supplemental Tuition that nonresident students must pay in addition to mandatory systemwide charges and PDST. Total charges for nonresident students continue to be significantly above those for resident students.

(b) Where noted, 2012-13 and 2013-14 represent years two and three, respectively, of the program's multi-year plan; thus PDST levels are not available for 2014-15.

**Attachment 2-B: Multi-Year Professional Degree Supplemental Tuition Levels – Nonresidents (a)**

	2011-12 PDST	2012-13 PDST	2013-14 PDST	2014-15 PDST	2012-13 increase	2013-14 increase	2014-15 increase
<b>Applied Economics and Finance</b>							
Santa Cruz	n/a	\$8,001	\$8,325	\$8,658	(b)	4.0%	4.0%
<b>Architecture</b>							
Los Angeles	\$8,000	\$8,000	\$8,560	\$9,159	0.0%	7.0%	7.0%
<b>Art (M.F.A.)</b>							
Los Angeles	\$5,000	\$5,298	\$5,616	\$5,952	6.0%	6.0%	6.0%
<b>Biotechnology Management</b>							
Irvine	n/a	\$11,160	\$11,940	\$12,777	(b)	7.0%	7.0%
<b>Business</b>							
Berkeley	\$26,164	\$28,850	\$30,214	\$31,192	10.3%	4.7%	3.2%
Davis	\$22,176	\$23,340	\$24,741	(b)	5.2%	6.0%	(b)
Irvine	\$18,714	\$19,275	\$19,854	(b)	3.0%	3.0%	(b)
Los Angeles	\$24,667	\$26,426	\$27,747	\$29,135	7.1%	5.0%	5.0%
Riverside	\$21,354	\$22,848	\$24,444	\$26,157	7.0%	7.0%	7.0%
San Diego	\$17,644	\$19,761	\$22,134	\$24,789	12.0%	12.0%	12.0%
<b>Dental Hygiene</b>							
San Francisco	\$12,036	\$13,206	\$14,298	(b)	9.7%	8.3%	(b)
<b>Dentistry</b>							
Los Angeles	\$21,115	\$21,116	\$22,812	\$24,636	0.0%	8.0%	8.0%
San Francisco	\$25,068	\$27,576	\$30,336	(b)	10.0%	10.0%	(b)
<b>Development Practice</b>							
Berkeley	n/a	\$18,384	\$18,600	\$18,984	(b)	1.2%	2.1%
<b>Educational Leadership</b>							
Davis	\$4,002	\$4,200	\$4,410	(b)	4.9%	5.0%	(b)
<b>Engineering (M.Eng.)</b>							
Berkeley	\$22,000	\$23,760	\$25,660	(b)	8.0%	8.0%	(b)
<b>Engineering Management</b>							
Irvine	n/a	\$12,000	\$12,840	\$13,740	(b)	7.0%	7.0%
<b>Environmental Design</b>							
Berkeley	\$6,000	\$6,300	\$6,616	(b)	5.0%	5.0%	(b)
<b>Environmental Science and Engineering</b>							
Los Angeles	\$7,267	\$7,656	\$8,230	\$8,847	5.4%	7.5%	7.5%
<b>Genetic Counseling</b>							
Irvine	n/a	\$9,000	\$9,900	\$10,890	(b)	10.0%	10.0%
<b>Health Informatics</b>							
Davis	\$6,000	\$6,420	\$6,870	(b)	7.0%	7.0%	(b)
<b>Information Management</b>							
Berkeley	\$6,400	\$6,800	\$7,200	(b)	6.3%	5.9%	(b)
<b>International Relations and Pacific Studies</b>							
San Diego	\$7,098	\$7,596	\$8,127	(b)	7.0%	7.0%	(b)
<b>Law</b>							
Berkeley	\$27,110	\$26,870	\$28,500	(b)	-1.0%	6.0%	(b)
Davis	\$27,110	\$31,188	\$35,400	(b)	15.0%	13.5%	(b)
Irvine	\$27,004	\$26,004	\$27,304	(b)	-3.7%	5.0%	(b)
Los Angeles	\$27,004	\$26,004	\$27,304	\$28,669	-3.7%	5.0%	5.0%

(a) Some schools have opted to set PDST levels for *nonresident* students lower than those for *resident* students in the same program in acknowledgement of the \$12,245 in Nonresident Supplemental Tuition that nonresident students must pay in addition to mandatory systemwide charges and PDST. Total charges for nonresident students continue to be significantly above those for resident students.

(b) Where noted, 2012-13 and 2013-14 represent years two and three, respectively, of the program's multi-year plan; thus PDST levels are not available for 2014-15.

(continued)

**Attachment 2-B: Multi-Year Professional Degree Supplemental Tuition Levels – Nonresidents (a) (continued)**

	2011-12 PDST	2012-13 PDST	2013-14 PDST	2014-15 PDST	2012-13 increase	2013-14 increase	2014-15 increase
<b>Medicine</b>							
Berkeley (Jt. MD/MS)	\$18,636	\$19,914	\$21,282	(b)	6.9%	6.9%	(b)
Davis	\$18,636	\$19,914	\$21,282	(b)	6.9%	6.9%	(b)
Irvine	\$18,636	\$19,914	\$21,282	(b)	6.9%	6.9%	(b)
Los Angeles	\$18,636	\$19,914	\$21,282	\$22,745	6.9%	6.9%	6.9%
Riverside	\$18,636	\$19,914	\$21,282	(b)	6.9%	6.9%	(b)
San Diego	\$18,636	\$19,914	\$21,282	(b)	6.9%	6.9%	(b)
San Francisco	\$18,636	\$19,914	\$21,282	(b)	6.9%	6.9%	(b)
<b>Nursing</b>							
Davis	\$5,730	\$7,740	\$10,440	\$14,100	35.1%	34.9%	35.1%
Irvine	\$5,730	\$7,740	\$10,440	\$14,100	35.1%	34.9%	35.1%
Los Angeles	\$5,730	\$7,740	\$10,449	\$14,106	35.1%	35.0%	35.0%
San Francisco	\$5,730	\$7,740	\$10,440	\$14,100	35.1%	34.9%	35.1%
<b>Optometry</b>							
Berkeley	\$14,674	\$16,436	\$18,408	(b)	12.0%	12.0%	(b)
<b>Pharmacy</b>							
San Diego	\$18,354	\$19,638	\$21,012	(b)	7.0%	7.0%	(b)
San Francisco	\$18,354	\$19,638	\$21,012	(b)	7.0%	7.0%	(b)
<b>Physical Therapy</b>							
San Francisco	\$12,108	\$12,954	\$13,860	(b)	7.0%	7.0%	(b)
<b>Preventive Veterinary Medicine</b>							
Davis	\$6,198	\$6,198	\$6,510	(b)	0.0%	5.0%	(b)
<b>Product Development</b>							
Berkeley	n/a	\$16,000	\$16,000	\$18,000	(b)	0.0%	12.5%
<b>Public Health</b>							
Berkeley	\$6,758	\$7,232	\$7,740	(b)	7.0%	7.0%	(b)
Davis	\$7,266	\$7,656	\$8,076	(b)	5.4%	5.5%	(b)
Irvine	\$5,612	\$5,613	\$5,613	(b)	0.0%	0.0%	(b)
Los Angeles	\$7,267	\$7,656	\$8,073	\$8,477	5.4%	5.4%	5.0%
<b>Public Policy</b>							
Berkeley	\$7,746	\$8,522	\$9,374	(b)	10.0%	10.0%	(b)
Irvine	\$5,563	\$5,952	\$6,369	(b)	7.0%	7.0%	(b)
Los Angeles	\$7,267	\$7,775	\$8,319	\$8,902	7.0%	7.0%	7.0%
<b>Social Welfare</b>							
Berkeley	\$4,000	\$4,000	\$4,200	(b)	0.0%	5.0%	(b)
Los Angeles	\$5,971	\$6,150	\$6,396	\$6,651	3.0%	4.0%	4.0%
<b>Statistics</b>							
Berkeley	n/a	\$15,000	\$16,500	\$18,100	(b)	10.0%	9.7%
<b>Theater, Film, and Television</b>							
Los Angeles	\$8,659	\$9,534	\$10,496	\$11,546	10.1%	10.1%	10.0%
<b>Urban Planning</b>							
Los Angeles	\$5,971	\$6,390	\$6,837	\$7,317	7.0%	7.0%	7.0%
<b>Veterinary Medicine</b>							
Davis	\$15,216	\$15,216	\$15,977	(b)	0.0%	5.0%	(b)

(a) Some schools have opted to set PDST levels for *nonresident* students lower than those for *resident* students in the same program in acknowledgement of the \$12,245 in Nonresident Supplemental Tuition that nonresident students must pay in addition to mandatory systemwide charges and PDST. Total charges for nonresident students continue to be significantly above those for resident students.

(b) Where noted, 2012-13 and 2013-14 represent years two and three, respectively, of the program's multi-year plan; thus PDST levels are not available for 2014-15.



**Attachment 3: 2012-13 Total Resident Charges (a): Professional Degree Programs with Proposed Total In-State Charges at UC and the Average of Public Comparison Institutions**

	Proposed 2012-13 Total Resident Charges: UC	Projected 2012-13 Total Resident Charges: Public Comparison Institution Average	Difference between UC and Average Public Comparison Charges
<b>Applied Economics and Finance</b>			
Santa Cruz	\$24,030	\$17,987	\$6,043
<b>Architecture</b>			
Los Angeles	\$22,809	\$17,443	\$5,366
<b>Art (M.F.A.)</b>			
Los Angeles	\$23,287	\$11,227	\$12,060
<b>Biotechnology Management</b>			
Irvine	\$27,050	\$29,240	(\$2,190)
<b>Business</b>			
Berkeley	\$53,731	\$51,169	\$2,562
Davis	\$38,727	\$44,883	(\$6,156)
Irvine	\$37,946	\$42,696	(\$4,750)
Los Angeles	\$48,165	\$52,174	(\$4,009)
Riverside	\$37,489	\$42,274	(\$4,785)
San Diego	\$41,783	\$45,117	(\$3,334)
<b>Dental Hygiene</b>			
San Francisco	\$28,457	\$40,042	(\$11,585)
<b>Dentistry</b>			
Los Angeles	\$40,942	\$41,623	(\$681)
San Francisco	\$42,827	\$40,014	\$2,813
<b>Development Practice</b>			
Berkeley	\$33,567	\$14,581	\$18,986
<b>Educational Leadership</b>			
Davis	\$19,587	\$15,351	\$4,236
<b>Engineering (M.Eng.)</b>			
Berkeley	\$47,583	\$39,034	\$8,549
<b>Engineering Management</b>			
Irvine	\$27,050	\$20,989	\$6,061
<b>Environmental Design</b>			
Berkeley	\$21,483	\$21,352	\$131
<b>Environmental Science and Engineering</b>			
Los Angeles	\$22,009	\$18,051	\$3,958
<b>Genetic Counseling</b>			
Irvine	\$24,050	\$22,179	\$1,871
<b>Health Informatics</b>			
Davis	\$21,807	\$10,906	\$10,901
<b>Information Management</b>			
Berkeley	\$21,983	\$20,783	\$1,200
<b>International Relations and Pacific Studies</b>			
San Diego	\$22,112	\$29,869	(\$7,757)
<b>Law</b>			
Berkeley	\$50,347	\$52,022	(\$1,675)
Davis	\$49,564	\$52,022	(\$2,458)
Irvine	\$46,805	\$52,022	(\$5,217)
Los Angeles	\$47,464	\$52,022	(\$4,558)

(a) Total resident UC charges include mandatory systemwide charges (Tuition and Student Services Fee), Professional Degree Supplemental Tuition, health insurance, campus-based fees, and Nonresident Supplemental Tuition, disability insurance fees, and other fees where applicable. Because the recently enacted State budget calls for UC to avoid a tuition increase in 2012-13, proposed total resident UC charges for 2012-13 do not reflect an increase in mandatory systemwide charges.

(b) There are no comparable public programs to Theater, Film, and Television at Los Angeles.

(continued)

**Attachment 3: 2012-13 Total Resident Charges (a): Professional Degree Programs with Proposed Total In-State Charges at UC and the Average of Public Comparison Institutions (continued)**

	Proposed 2012-13 Total Resident Charges: UC	Projected 2012-13 Total Resident Charges: Public Comparison Institution Average	Difference between UC and Average Public Comparison Charges
<b>Medicine</b>			
Berkeley (Jt. MD/MS)	\$35,097	\$34,418	\$679
Davis	\$36,151	\$34,418	\$1,733
Irvine	\$35,055	\$34,418	\$637
Los Angeles	\$34,784	\$40,550	(\$5,766)
Riverside	\$34,619	\$40,550	(\$5,931)
San Diego	\$34,491	\$34,418	\$73
San Francisco	\$35,169	\$34,418	\$751
<b>Nursing</b>			
Davis	\$23,127	\$20,635	\$2,492
Irvine	\$22,790	\$20,635	\$2,155
Los Angeles	\$22,549	\$20,635	\$1,914
San Francisco	\$22,909	\$20,635	\$2,274
<b>Optometry</b>			
Berkeley	\$31,619	\$25,019	\$6,600
<b>Pharmacy</b>			
San Diego	\$34,154	\$24,541	\$9,613
San Francisco	\$34,832	\$24,541	\$10,291
<b>Physical Therapy</b>			
San Francisco	\$32,280	\$19,622	\$12,658
<b>Preventive Veterinary Medicine</b>			
Davis	\$21,129	\$16,432	\$4,697
<b>Product Development</b>			
Berkeley	\$37,183	\$39,453	(\$2,270)
<b>Public Health</b>			
Berkeley	\$22,415	\$17,387	\$5,028
Davis	\$24,545	\$17,380	\$7,165
Irvine	\$20,663	\$18,051	\$2,612
Los Angeles	\$22,009	\$18,051	\$3,958
<b>Public Policy</b>			
Berkeley	\$23,203	\$16,517	\$6,686
Irvine	\$21,002	\$19,728	\$1,274
Los Angeles	\$22,097	\$16,517	\$5,580
<b>Social Welfare</b>			
Berkeley	\$19,183	\$16,417	\$2,766
Los Angeles	\$20,539	\$16,417	\$4,122
<b>Statistics</b>			
Berkeley	\$30,183	\$31,120	(\$937)
<b>Theater, Film, and Television (b)</b>			
Los Angeles	\$24,343	n/a	n/a
<b>Urban Planning</b>			
Los Angeles	\$20,761	\$10,339	\$10,422
<b>Veterinary Medicine</b>			
Davis	\$33,251	\$31,557	\$1,694

(a) Total resident UC charges include mandatory systemwide charges (Tuition and Student Services Fee), Professional Degree Supplemental Tuition, health insurance, campus-based fees, and Nonresident Supplemental Tuition, disability insurance fees, and other fees where applicable. Because the recently enacted State budget calls for UC to avoid a tuition increase in 2012-13, proposed total resident UC charges for 2012-13 do not reflect an increase in mandatory systemwide charges.

(b) There are no comparable public programs to Theater, Film, and Television at Los Angeles.