



Regents of the University of California  
Committee on Educational Policy  
Discussion Item

PLANNING FOR A  
University of California School of Global Health

September 17, 2008



## Planning for a UC School of Global Health

---

- Context  
*“Global Health and California in the 21st Century”*  
~Professor Sir Richard Feachem
- Planning Process  
*“University of California School of Global Health”*  
~Haile T. Debas, M.D.



# Global Health and California in the 21<sup>st</sup> Century

---

Professor Sir Richard Feachem  
*Director, Global Health Group*



## Global Health

---

The health of **all** of humankind  
*and*  
the global and local factors and trends  
which improve or worsen it



# Global Health Challenges and Opportunities Never Greater

---

## 1. Challenges

- Disparities
- Pandemics
- Health Systems

## 2. Opportunities

- Political commitment
- Money on the table
- Accelerating science
- The vision and commitment of young people

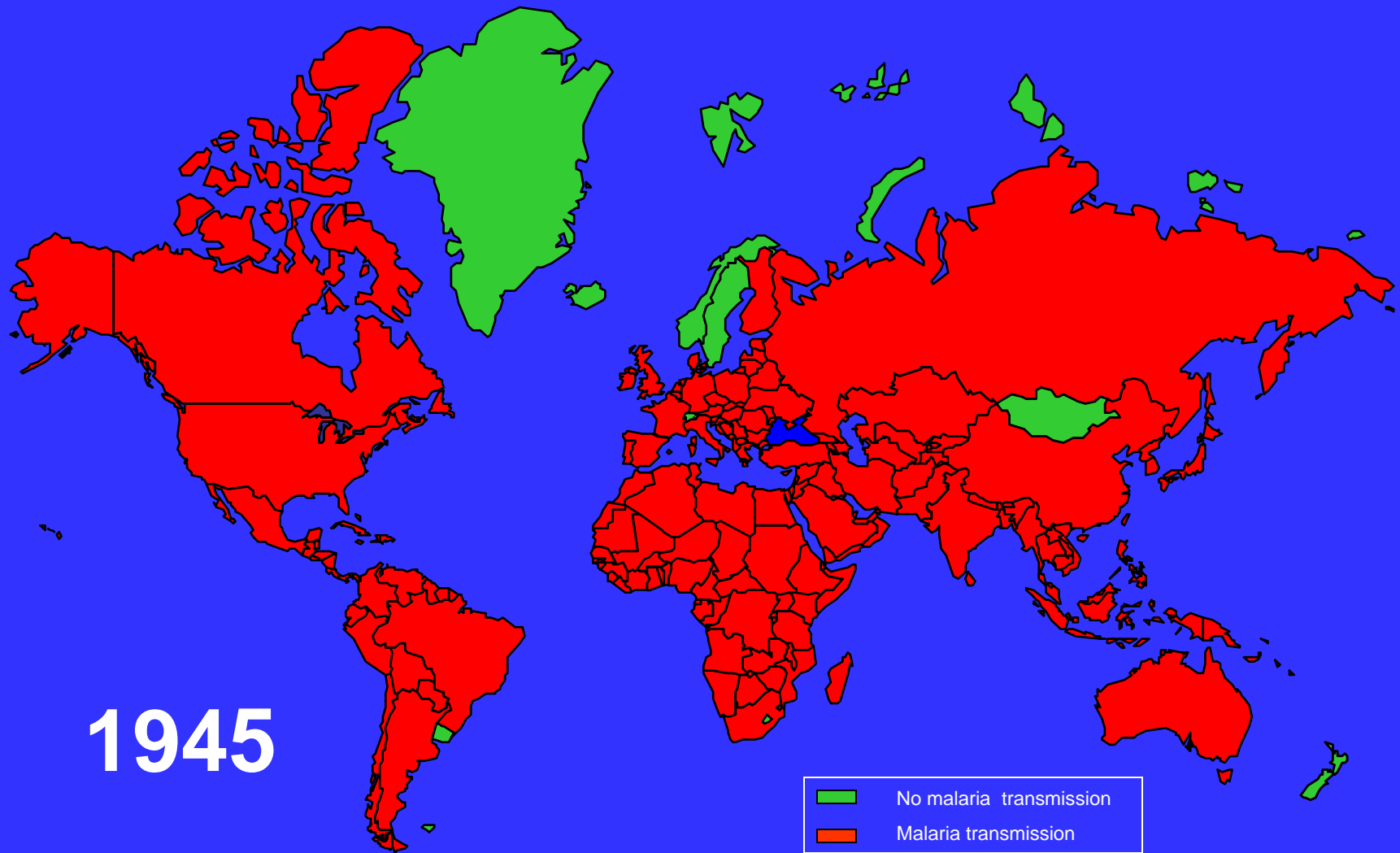


## Global Health = Local Health The World and California

---

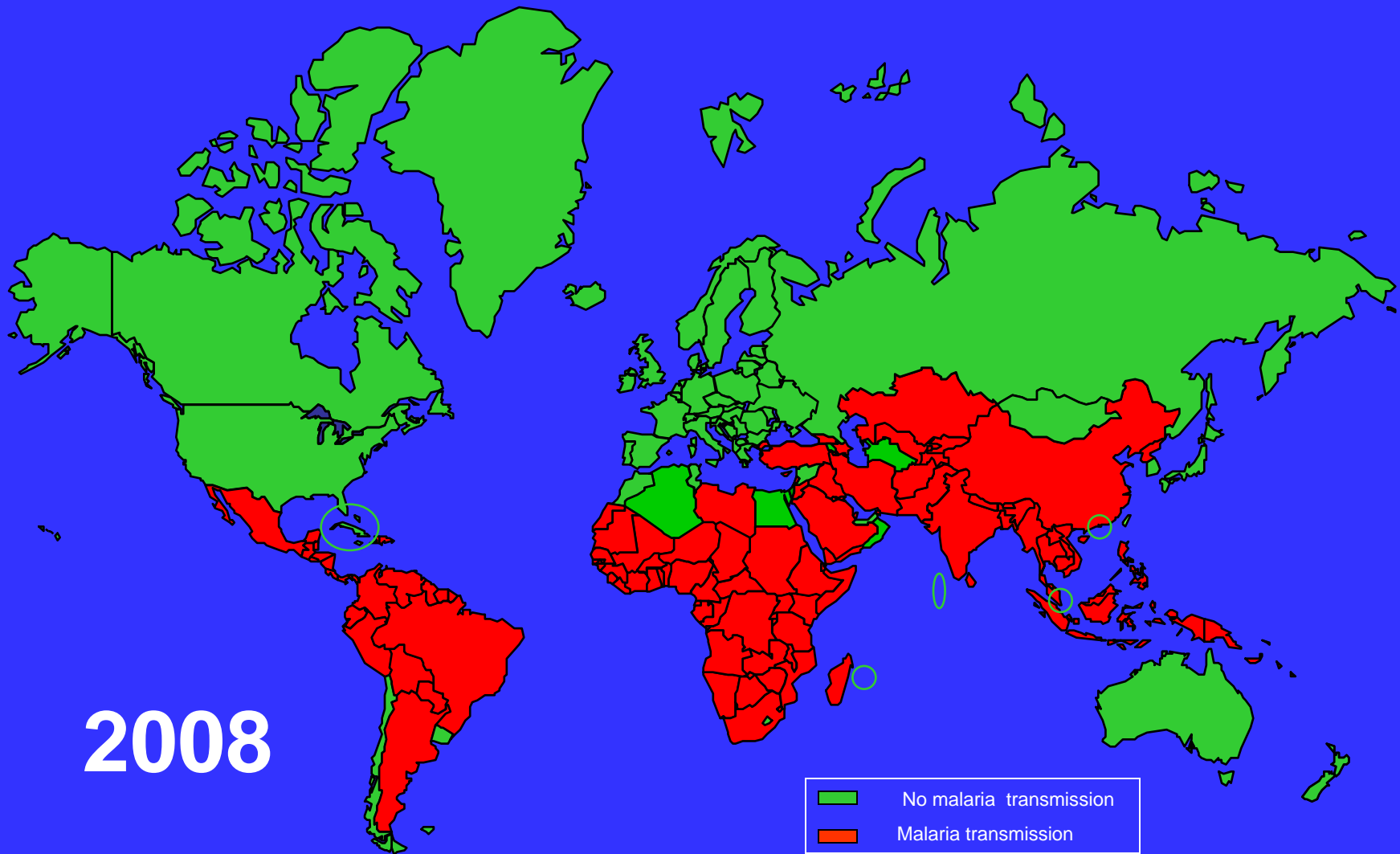
1. Once bitten ...
2. Sex, Drugs, Sneezes, and Chickens
  - HIV/AIDS
  - MDR/XDR TB
  - H5N1
3. California can seriously damage your health
4. A big sucking sound

# The Boundaries of Malaria Transmission By Country



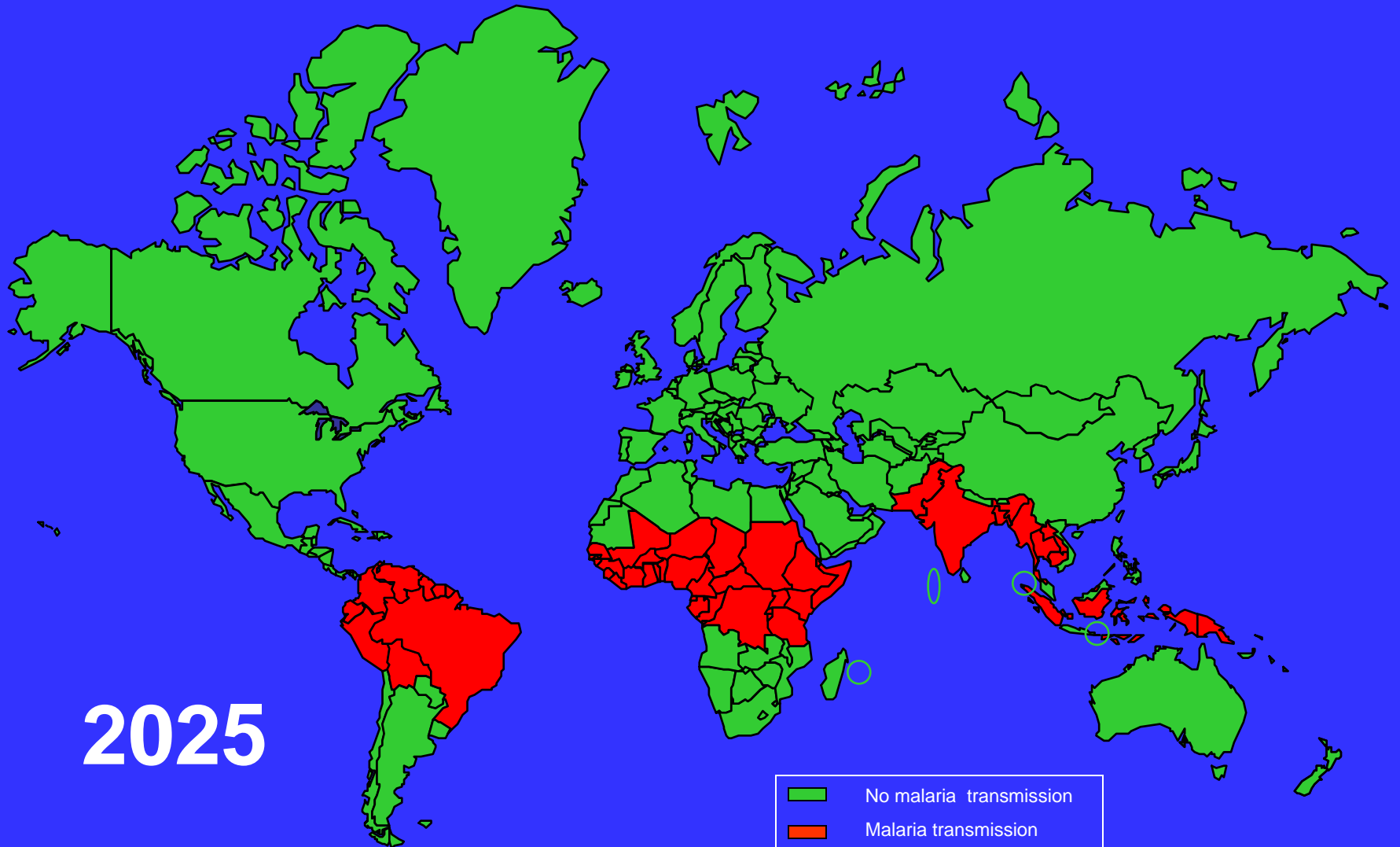


# The Boundaries of Malaria Transmission By Country



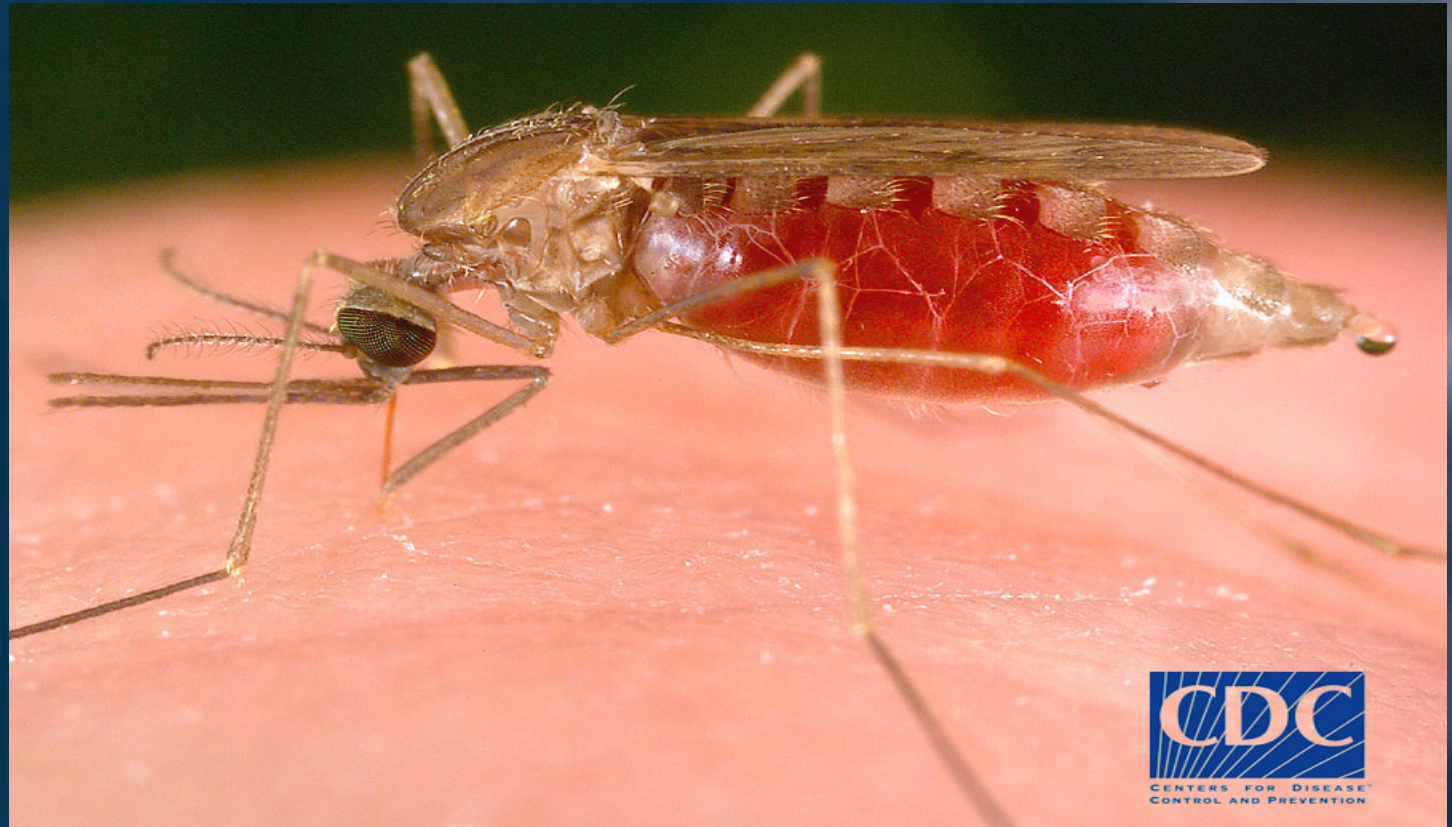


# The Boundaries of Malaria Transmission By Country





## Female *Anopheles freeborni* mosquito having a blood meal





## Malaria in the USA and California

---

- Every year about 1,500 cases in the USA, of which 15% in California
- Between 1957 and 2003: 63 outbreaks of malaria in the USA, of which 27% in California
- Largest outbreak recorded, Carlsbad, San Diego County, June-September, 1986, 28 cases



## PANDEMICS

### The Spread of Human Cases of H5N1

---

#### First Cases by Country and Date

- 1997: Hong Kong
- 2003: China
- 2004: Vietnam and Thailand
- 2005: Cambodia and Indonesia
- 2006: Turkey, Iraq, Azerbaijan, Egypt, and Djibouti
- 2007: Nigeria, Laos, Myanmar, and Pakistan
- 2008: Bangladesh
- *20XX: California?*

#### By June 19, 2008

385 known human cases of whom 243 (63%) died in 16 countries

Two thirds of reported cases and deaths are in Indonesia and Vietnam



## The Risks of Moving to California

---

### For Mexicans, moving to California

- Risks of maternal morbidity increase
- Likelihood and duration of breastfeeding decrease
- Risks of gastric cancer if working in the citrus fruit industry increase
- Risks of HIV infection increase





## The Global Health Workforce

---

- Foreign born and trained (FBT) nurses comprise roughly 15% of nurse workforce in California today
- Almost twice the next highest state – Florida
- One-third of newly licensed nurses in California today are FBT
- For the US, most FBT nurses come from the Philippines, Canada, United Kingdom, and Nigeria (82% of total)
- FBT physicians comprise 22% of Californian workforce



## Planning for a UC School of Global Health

---

- 2005: UC Long-term Guidance Committee
- 2006: All-Campuses Exploratory Meeting
- 2007: 18-month UCOP Planning Grant
- 2007-2008: Phase I Planning
- 2008-2010: Phase II Planning





## Planning Committees

---

- All-Campuses Planning Committee (ACPC)
- Senior Advisory Committee (SAC)
- External Scientific Advisory Board (ESAB)



## All-Campuses Planning Committee

---

- Faculty from all 10 Campuses
- Academic Senate
- Students
- 27 Areas of Expertise represented



## Senior Advisory Committee

---

- Campuses Represented 10
- Chancellors/Vice Chancellors 6
- Deans 15
- Associate Deans/Directors 4
- Academic Senate 1
- UCOP 1
- Disciplines Represented 16



## External Scientific Advisory Board

---

- Jo-Ivey Boufford, President, New York Academy of Medicine
- Harvey Fineberg, President, Institute of Medicine, National Academy of Sciences (*Chair*)
- David Gollaher, President & CEO, California Healthcare Institute
- Wyatt R. Hume, Former Provost and Executive Vice-President, University of California
- Jeffrey Koplan, Vice President, Woodruff Health Science Center, Emory University
- John Martin, President & CEO, Gilead Sciences
- Joy Phumaphi, Vice President for Human Development, World Bank
- Jaime Sepulveda, Director of Integrated Health Solutions Development, The Bill and Melinda Gates Foundation



## Vision for UC School of Global Health

---

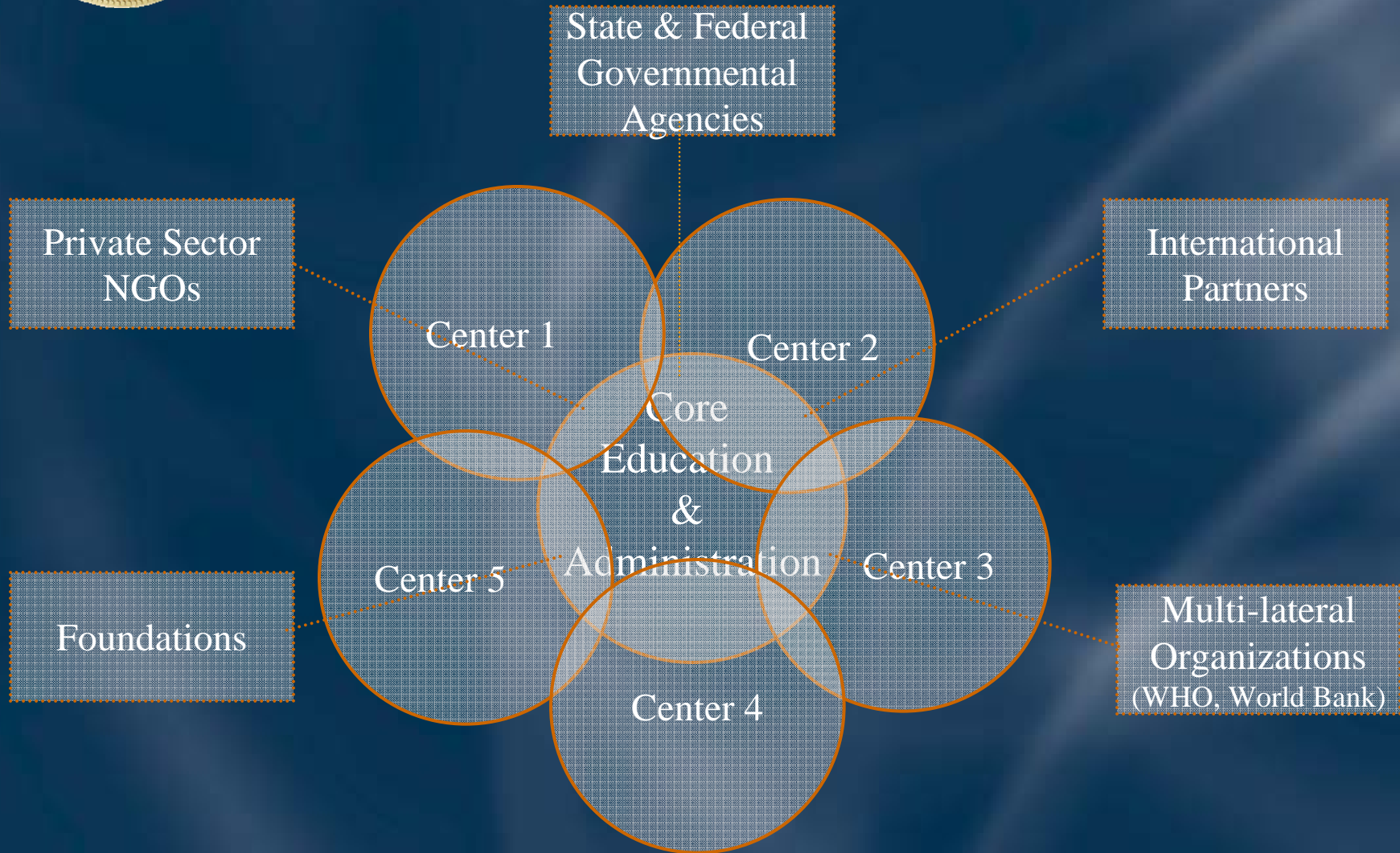
- Problem-based: *not discipline-based*
- Interdisciplinary: *both health and non-health sciences*
- Multi-campus
- Action-oriented: *implementing projects and policies*
- Value-adding: *not replicating existing schools*





# Structure

## Graphic Representation of School





## Education and Training

---

- Initially only graduate programs
- Education will occur at both Administrative Core and the Centers
- Degrees: Masters and PhDs
- Degrees to be awarded jointly between School and Campus





## Research Agenda Workshop Themes (1)

---

UCB: Global Health Delivery Systems

UCD: Agro-Eco Systems and Human Health

UCI: Pandemics and Emerging Infectious Diseases

UCLA: Climate Change and Health

UCM: Pandemics, Security, and Private Rights

UCR: Water- and Vector-Borne Diseases around the World: The Role of Technology, Economics, Culture and Communications in Prevention and Treatment



## Research Agenda Workshop Themes (2)

---

UCSB: Ecology and Health

UCSC: Information Technology and Infectious Diseases

Natural Products for Treatment of Neglected Diseases (*with UCSF*)

UCSD: Pandemic Infectious Diseases Migration, Mobility, and Health

UCSF: Global Women's Health and Disparities  
Responding to Global Challenges of HIV, TB, and Malaria



## Phase II Planning (2008 – 2010)

---

- Finalize details of governance
- Fully develop educational program
- Competitive selection of Centers through a 3-step process (workshops, LOI, full proposals)
- Develop detailed resource plan
- Implement a fund-raising strategy: Private-Public Partnership
- Prepare final School proposal to be reviewed by Academic Senate
- Seek Regental approval in 2010